

A wide, horizontal band of light with a rainbow-like spectrum, transitioning from purple at the top to red at the bottom, set against a dark background.

BESPOKE AS
STANDARD

Ledridge Lighting understand that lighting is an essential part of everyday life.

It creates environments for people to work in, atmospheres for businesses to thrive in and is a key factor in setting the mood and ambience of a location.

Ledridge Lighting has a wealth of experience, totalling nearly 100 years in the lighting industry.

With a rich history in supplying lighting to the retail display sector, the team at Ledridge Lighting has vast knowledge of the products and service levels required to provide wholesalers, contractors, architects and designers with a complete lighting experience which is second to none.

We pride ourselves on offering unrivalled customer service, from initial specification through to delivery and beyond.

Ledridge Lighting do the hard work to save you time and money.

We understand that your time is valuable which is why all of our LED ribbons and extrusions can be supplied in cut lengths with pre-terminated leads. Our workmanship is outstanding and all orders are fully tested prior to dispatch, giving you complete confidence on-site when time is at a premium.

At Ledridge Lighting all orders are bespoke as standard.

We understand that every project is unique, which is why our Midlands-based workshop provides fully bespoke lighting solutions built to exact client specification. Ledridge Lighting also has access to a wide variety of traditional lighting products meaning that our bespoke services are not just limited to our LED ribbon products. We can also supply all types of florescent or metal halide lighting for your projects, all pre-wired if required for ease of installation.

We can also supply electrical testing certificates for our assemblies upon request.

Leading the way in LED technology

Ledridge Lighting endeavour to always be at the forefront of LED technology. We already stock the most comprehensive range of LED ribbons in the UK and our product range is constantly evolving.

Our new range of 'Touch' DMX controllers are easy to use and are the most versatile DMX controllers on the market, providing a professional lighting solution at an affordable price.

It is also our pleasure to introduce our new 'Colour Perfection' range of UK manufactured colour changing LED fittings. Every 'Colour Perfection' product is finished to the highest possible standard and comes with a 3 year warranty. All of these superior quality products are manufactured using high-grade LED chips, guaranteeing complete colour consistency every time. Quite simply we believe that this is the most reliable, versatile and professional range of colour changing products available.



USEFUL CONTACTS

Sales
T 0116 246 1188
F 0116 276 7164
sales@ledridge.co.uk

Accounts
T 0116 276 6030
accounts@ledridge.co.uk

Careers
www.ledridge.co.uk/careers
careers@ledridge.co.uk

Marketing
marketing@ledridge.co.uk

Address
Unit 6
19 Highcliffe Road
Hamilton
Leicester
LE5 1TY

Errors and Omissions Excepted: Every care has been taken to ensure that all information in this catalogue is correct.

STATIC COLOUR LED RIBBON

PAGE 6 - 25

COLOUR CHANGING LED RIBBON

PAGE 26 - 31

LED EXTRUSIONS & PROFILES

PAGE 32- 43

LED LINK MODULES

PAGE 44 - 51

LED BACKLIGHT PANELS

PAGE 52 - 55

LED DRIVERS & INTERFACES

PAGE 56 - 61

LED COLOUR PERFECTION RANGE

PAGE 62 - 99

LED CONTROLLERS

PAGE 100 - 109

LED BEST PRACTICE

PAGE 110

S
T
E
N
T
H
E
N
C
O
N



STATIC COLOUR LED RIBBON

LED48

4.8W STATIC COLOUR RIBBON
PAGE 8

LED72

7.2W STATIC COLOUR RIBBON
PAGE 10

LED96

9.6W STATIC COLOUR RIBBON
PAGE 12

LED144

14.4W STATIC COLOUR RIBBON
PAGE 14

LED245

24.5W STATIC COLOUR RIBBON
PAGE 16

LED48sv

4.8W SIDE EMITTING STATIC COLOUR RIBBON
PAGE 18

LED96sv

9.6W SIDE EMITTING STATIC COLOUR RIBBON
PAGE 20

LED192DL

19.2W DOUBLE LINE STATIC COLOUR RIBBON
PAGE 22

LED192AJ

19.2W COLOUR ADJUSTABLE 3000K - 6000K RIBBON
PAGE 24

“ I began using Ledridge Lighting in 2011 and have continued to do so on various size projects. They are always very helpful and punctual with all my requirements, whether that be a site visit, lighting design or quotations. They are a very professional and personable company to deal with. ”

Vince Beaney, Bright Future Lighting



IP20

IP65

30,000

HOUR AVERAGE
LED
LIFE SPAN

2

YEAR
WARRANTY

LED48

Install LED48 to achieve that subtle glow that can accentuate any defined area or feature.

With a gentle 4.8w per metre, this ribbon is ideal for creating mood lighting around kitchen plinths and cupboards, or for halo effect lighting around mirrors and pictures.

Our LED48 can emphasise any architectural detail and add a sophisticated sparkle to any interior design.



TECHNICAL SPECIFICATIONS

IP RATING	IP20	IP65
PART CODE	FLR1M8	FLR8651M
WATTAGE	4.8W per metre	
INPUT VOLTAGE	12V DC Constant Voltage	
WIDTH	8mm	
HEIGHT	2mm	3mm
LUMEN OUTPUT 3000K (WARM WHITE)	240lm per metre	
LUMEN OUTPUT 4000K (NATURAL WHITE)	270lm per metre	
LUMEN OUTPUT 6000K (COOL WHITE)	300lm per metre	
LED CHIP	Epistar 3528	
LEDS PER METRE	60	
CUTTING INCREMENT	50mm	
BEAM ANGLE	120°	
OPERATING TEMP.	-10° to 45°C	
DIMMABLE	Yes, with compatible dimmer interface or dimmable LED driver.	

COLOUR OPTIONS

3000K

4000K

6000K

BLUE





IP20

IP65

IP68

30,000
HOUR AVERAGE
LED
LIFE SPAN

2
YEAR
WARRANTY

LED72

Consider LED72 when you require illumination to add texture, focus and shape to your scheme.

It's perfect under shelves, kitchen cupboards and plinths. Alternatively use LED72 to highlight ceilings and mirrors in bathrooms, to create a decadent spa atmosphere.

When installed under bars or reception desks it draws the eye to the focal point of the design.

LED 72 is also great as an ambient light source to recreate that feeling of daylight.



TECHNICAL SPECIFICATIONS

IP RATING	IP20	IP65	IP68
PART CODE	FLRHP1M	FLR651M	FLR681M
WATTAGE	7.2W per metre		
INPUT VOLTAGE	12V DC Constant Voltage		
WIDTH	10mm		13mm
HEIGHT	2mm	3mm	4mm
LUMENS AT 3000K (WARM WHITE)	360lm per metre		
LUMENS AT 4000K (NATURAL WHITE)	390lm per metre		
LUMENS AT 6000K (COOL WHITE)	420lm per metre		
LED CHIP	Epistar 5050		
LEDS PER METRE	30		
CUTTING INCREMENT	100mm		
BEAM ANGLE	120°		
OPERATING TEMP.	-10° to 45°C		
DIMMABLE	Yes, with compatible dimmer interface or dimmable LED driver.		

COLOUR OPTIONS

3000K

4000K

6000K

BLUE

RED

AMBER

GREEN





IP20

30,000
HOUR AVERAGE
LED
LIFE SPAN

2
YEAR
WARRANTY

LED96

LED96 is the ribbon to specify if you want to add a sense of drama to your lighting scheme.

It has a bright, uniformed light created by the high density of 120 led chips per metre.

It's loved by the retail industry to create a bright strip of light whilst still being able to blend beautifully with other light sources to create a truly sensational design.

It is used to stunning effect in shop interiors and creates the perfect level of light for a ceiling halo scheme.

LED96 is available in standard lumen and high lumen. High lumen LED96 ribbon achieves even greater levels of illumination, whilst maintaining the same low consumption of just 9.6w per metre.



TECHNICAL SPECIFICATIONS

	STANDARD LUMEN	HIGH LUMEN
IP RATING	IP20	
PART CODE	FLRHD1M	FLRXP1M
WATTAGE	9.6W per metre	
INPUT VOLTAGE	12V DC Constant Voltage	
WIDTH	8mm	
HEIGHT	2mm	
LUMENS AT 3000K (WARM WHITE)	480lm per metre	840lm per metre
LUMENS AT 4000K (NATURAL WHITE)	540lm per metre	900lm per metre
LUMENS AT 6000K (COOL WHITE)	600lm per metre	960lm per metre
LED CHIP	Epistar 3528	Epistar 3528 High Lumen
LEDS PER METRE	120	
CUTTING INCREMENT	25mm	
BEAM ANGLE	120°	
OPERATING TEMP.	-10° to 45°C	
DIMMABLE	Yes, with compatible dimmer interface or dimmable LED driver.	

COLOUR OPTIONS

- 3000K
- 4000K
- 6000K





IP20

IP65

30,000
HOUR AVERAGE
LED
LIFE SPAN

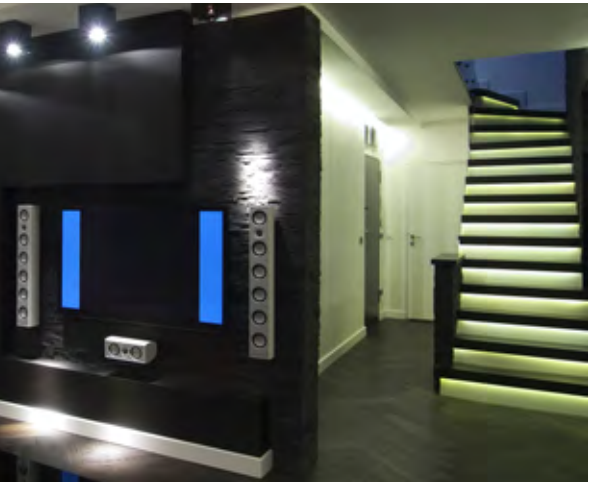
2
YEAR
WARRANTY

LED144

If you need impressive lighting for a large space or you want to create a real impact, LED144 is the correct ribbon choice for you.

Recommended for bar fronts, restaurant ceilings or where there are exposed rafters, LED144 will create a spacious and dramatic atmosphere.

LED144 is also extremely popular with sign makers as it is bright enough to be used in outdoor lighting schemes, enabling you to wall-wash perfectly with a consistent flood of light.



TECHNICAL SPECIFICATIONS

IP RATING	IP20	IP65
PART CODE	FLRSP1M	FLRSP651M
WATTAGE	14.4W per metre	
INPUT VOLTAGE	12V DC Constant Voltage	
WIDTH	10mm	
HEIGHT	2mm	3mm
LUMENS AT 3000K (WARM WHITE)	720lm per metre	
LUMENS AT 4000K (NATURAL WHITE)	780lm per metre	
LUMENS AT 6000K (COOL WHITE)	840lm per metre	
LED CHIP	Epistar 5050	
LEDS PER METRE	60	
CUTTING INCREMENT	50mm	
BEAM ANGLE	120°	
OPERATING TEMP.	-10° to 45°C	
DIMMABLE	Yes, with compatible dimmer interface or dimmable LED driver.	

COLOUR OPTIONS

3000K

4000K

6000K

BLUE

RED

AMBER

GREEN

DIMMABLE
INTERFACES
PAGES 60 - 61

LED DRIVERS
PAGES 58 - 59



LED245

This ground-breaking LED ribbon is ideal for installations where maximum output is essential.

With 204 super bright LEDs per metre, LED245 is by far our highest density LED ribbon. LED245 creates a beautiful blend of light for those who want an outstandingly bright ribbon, but would prefer not to identify the light source as individual chips.

LED245 is the preferred ribbon for retail installations, ideal for use where high output is required to make a statement and outshine the competition.

It can also be used, with outstanding results, as a primary light source for large areas such as bars and restaurants where there is little natural daylight.



TECHNICAL SPECIFICATIONS

IP RATING	IP20
PART CODE	FLRXXD1M
WATTAGE	24.5W per metre
INPUT VOLTAGE	24V DC Constant Voltage
WIDTH	10mm
HEIGHT	2mm
LUMENS AT 3000K (WARM WHITE)	1800lm per metre
LUMENS AT 4000K (NATURAL WHITE)	1530lm per metre
LUMENS AT 6000K (COOL WHITE)	2000lm per metre
LED CHIP	Epistar 3014
LEDS PER METRE	204
CUTTING INCREMENT	30mm
BEAM ANGLE	120°
OPERATING TEMPERATURE	-10° to 45°C
DIMMABLE	Yes, with compatible dimmer interface or dimmable LED driver.

COLOUR OPTIONS

- 3000K
- 4000K
- 6000K





IP20

IP65

30,000
HOUR AVERAGE
LED
LIFE SPAN

2
YEAR
WARRANTY

LED48sv

Our LED48SV has the LED chips cleverly fitted at a 90 degree angle, so that the ribbon can be applied to any curved surface but allowing the light to shine up or down.

If you want to create something truly unique and beautiful, this is a fantastic solution to highlight ceilings, reception desks or any curved features or furniture.

Let the LEDs illuminate the contours of your design and let your imagination flow.



TECHNICAL SPECIFICATIONS

IP RATING	IP20	IP65
PART CODE	FLRSV1M	FLRSV651M
WATTAGE	4.8W per metre	
INPUT VOLTAGE	12V DC Constant Voltage	
WIDTH	8mm	11mm
HEIGHT	2mm	3mm
LUMENS AT 3000K (WARM WHITE)	240lm per metre	
LUMENS AT 4000K (NATURAL WHITE)	270lm per metre	
LUMENS AT 6000K (COOL WHITE)	300lm per metre	
LED CHIP	Epistar 3350	
LEDS PER METRE	60	
CUTTING INCREMENT	50mm	
BEAM ANGLE	120°	
OPERATING TEMP.	-10° to 45°C	
DIMMABLE	Yes, with compatible dimmer interface or dimmable LED driver.	

COLOUR OPTIONS





IP20

30,000
HOUR AVERAGE
LED
LIFE SPAN

2
YEAR
WARRANTY

sales@ledridge.co.uk
www.ledridge.co.uk

LED96SV

As with the LED48SV the chips are cleverly fitted at a 90° angle so that the ribbon can be applied to any curved surface, whilst allowing the light to shine up or down.

If you want to increase the impact of a design use LED96SV, providing more than double the lumen output of its LED48SV counterpart, whilst only consuming 9.6w per metre.

Specify this ribbon as a way of creating a special ambience in your scheme by using the curves of a design to emphasise movement and flow.



TECHNICAL SPECIFICATIONS

IP RATING	IP20
PART CODE	FLRHDSV1M
WATTAGE	9.6W per metre
INPUT VOLTAGE	12V DC Constant Voltage
WIDTH	8mm
HEIGHT	2mm
LUMENS AT 3000K (WARM WHITE)	720lm per metre
LUMENS AT 4000K (NATURAL WHITE)	780lm per metre
LUMENS AT 6000K (COOL WHITE)	840lm per metre
LED CHIP	Epistar 3350
LEDS PER METRE	120
CUTTING INCREMENT	25mm
BEAM ANGLE	120°
OPERATING TEMP.	-10° to 45°C
DIMMABLE	Yes, with compatible dimmer interface or dimmable LED driver.

COLOUR OPTIONS

- 3000K
- 6000K





IP20

30,000
HOUR AVERAGE
LED
LIFE SPAN

2
YEAR
WARRANTY

sales@ledridge.co.uk
www.ledridge.co.uk

LED192_{DL}

LED192 is a unique double-line LED ribbon.

In installations where one LED strip simply does not provide a high enough level of illumination LED192DL excels.

With two banks of LEDs on the same PCB the LED192DL provides the equivalent output of two LED96 ribbons running next to each other - but incorporated into a single, simple to install ribbon.

On large installations LED192DL can be a real time-saver for the installer.



TECHNICAL SPECIFICATIONS

IP RATING	IP20
PART CODE	FLRDL1M
WATTAGE	19.2W per metre
INPUT VOLTAGE	12V DC Constant Voltage
WIDTH	15mm
HEIGHT	2mm
LUMENS AT 3000K (WARM WHITE)	960lm per metre
LUMENS AT 6000K (COOL WHITE)	1200lm per metre
LED CHIP	Epistar 3528
LEDS PER METRE	120
CUTTING INCREMENT	25mm
BEAM ANGLE	120°
OPERATING TEMP.	-10° to 45°C
DIMMABLE	Yes, with compatible dimmer interface or dimmable LED driver.

COLOUR OPTIONS

- 3000K
- 6000K





IP20

30,000
HOUR AVERAGE
LED
LIFE SPAN

2
YEAR
WARRANTY

LED192AJ

If you need a space to be multi-functional and would like the flexibility to be able to change the mood of your scheme this is the ribbon for you.

This unique ribbon can be controlled via our Adjustable Wheel Controller so that you can choose from a warm 3000k light output, all the way through to a sharp, bright 6000k.

LED192AJ is the ideal product to use in a retail display unit where the flexibility of varying the colour temperature could be fully realised.

Well suited to modern day open plan living; LED192AJ can offer bright, clean light to work under but has the flexibility to create a warm and welcoming atmosphere, ideal for entertaining guests.



TECHNICAL SPECIFICATIONS

IP RATING	IP20
PART CODE	FLRADJ1M
WATTAGE	19.2W per metre
INPUT VOLTAGE	12V DC Constant Voltage
WIDTH	10mm
HEIGHT	2mm
LED CHIP	Epistar 3528
LEDS PER METRE	120
CUTTING INCREMENT	50mm
BEAM ANGLE	120°
OPERATING TEMP.	-10° to 45°C

COLOUR OPTIONS

3000K to 6000K



Use the Adjustable Wheel Controller with the LED192AJ to control colour temperature.

Found on page 109.





COLOUR CHANGING LED RIBBON

RGB72

7.2W COLOUR CHANGING RIBBON

PAGE 28

RGB144

14.4W COLOUR CHANGING RIBBON

PAGE 30

“ Timber Design Leicester has been a loyal customer of Ledridge Lighting for several years and during that time they have supplied us with 100's of LED solutions, many for highly prestigious jobs. They are keen to get involved with any project we present to them and their expertise has proved very helpful in providing solutions to complex jobs. They are a professional and friendly team we always enjoy working with. ”

Trevor Brookes, Timber Design Leicester Ltd.



IP20

IP65

IP68

30,000
HOUR AVERAGE
LED
LIFE SPAN

2
YEAR
WARRANTY

RGB72

Adding colour to a lighting scheme gives you the flexibility to create different moods and atmospheres.

RGB72 is our 7.2watt per metre RGB ribbon and is perfect for use in domestic or commercial applications.

Commonly found in bars and restaurants, RGB72 can be controlled using basic RGB controllers or more advanced DMX systems.

RGB72 can be used both internally and externally to create dramatic and contrasting colour changing scenes. Choose from over 500 shades, spanning the whole colour spectrum, to create your perfect lighting illusion.



TECHNICAL SPECIFICATIONS

IP RATING	IP20	IP65	IP68
PART CODE	RGBR1M	RGBR651M	RGBR681M
WATTAGE	7.2W per metre		
INPUT VOLTAGE	12V DC Constant Voltage		
WIDTH	10mm		12mm
HEIGHT	2mm	3mm	4mm
LED CHIP	Epistar 5050		
LEDS PER METRE	30		
CUTTING INCREMENT	100mm		
BEAM ANGLE	120°		
OPERATING TEMP.	-10° to 45°C		





IP20

IP65

30,000
HOUR AVERAGE
LED
LIFE SPAN

2
YEAR
WARRANTY

RGB144

RGB144 is our brightest colour changing LED ribbon and is perfect for environments where dynamic, vibrant colours are required.

A real favourite for bars, restaurants and nightclubs, RGB144 can be controlled using basic RGB controllers or more advanced DMX systems.

RGB144 is also suitable for internal or external use and can be used to grab peoples attention with an output powerful enough to create an impressive wall-wash effect.

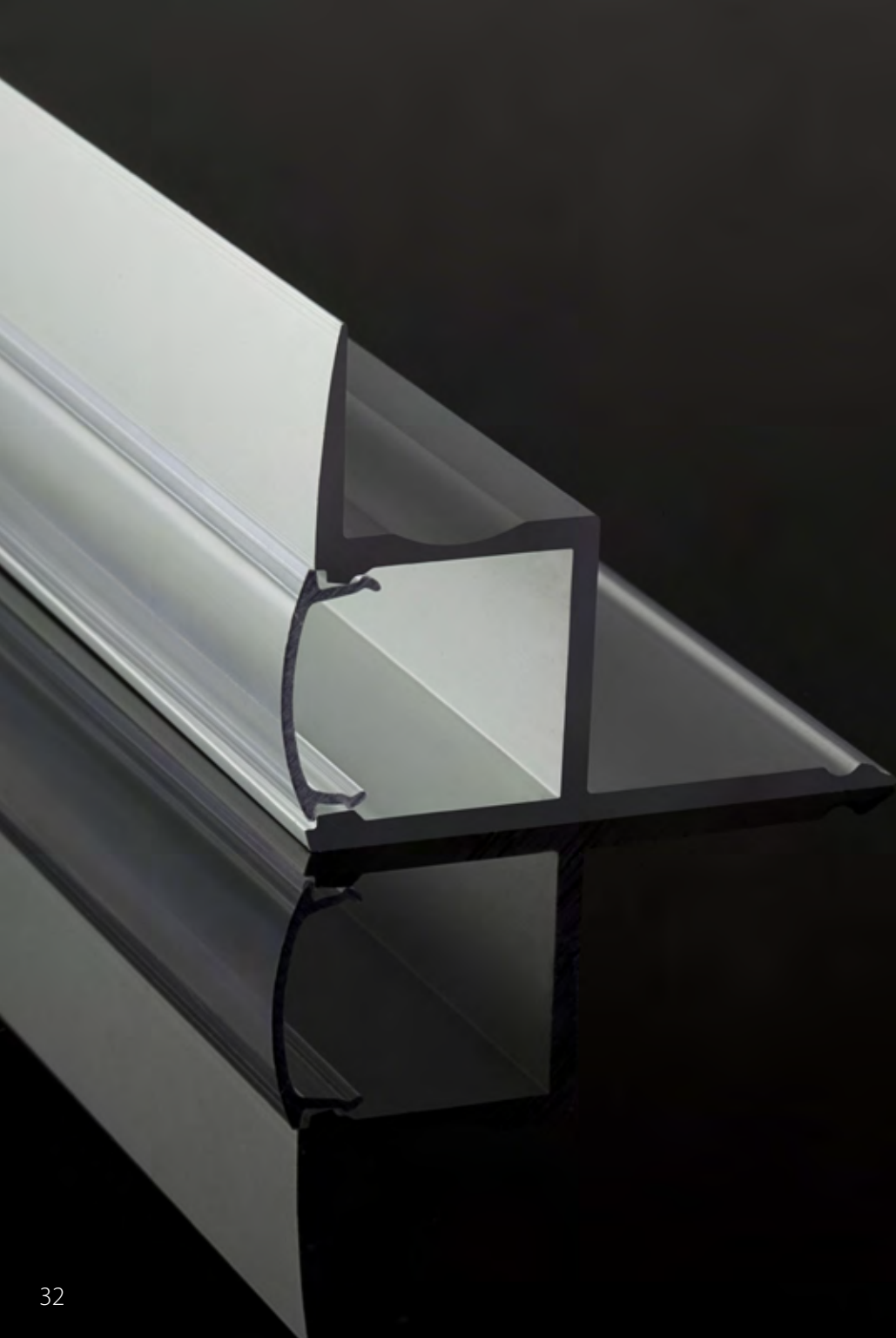


TECHNICAL SPECIFICATIONS

IP RATING	IP20		IP65
PART CODE	RGBRSP1M		RGBRSP651M
WATTAGE	14.4W per metre		
INPUT VOLTAGE	12V DC Constant Voltage		
WIDTH	10mm		
HEIGHT	2mm		3mm
LED CHIP	Epistar 3350		
LEDS PER METRE	60		
CUTTING INCREMENT	50mm		
BEAM ANGLE	120°		
OPERATING TEMP.	-10° to 45°C		


COMPATIBLE RGB
CONTROLLERS
PAGES 100 - 108


LED DRIVERS
PAGES 58 - 59



LED EXTRUSION

STANDARD EXTRUSION

PAGE 34

COMPACT EXTRUSION

PAGE 35

7MM RECESSED EXTRUSION

PAGE 36

15MM RECESSED EXTRUSION

PAGE 37

52MM RECESSED EXTRUSION

PAGE 38

45° ANGLED EXTRUSION

PAGE 39

ROUND EXTRUSION

PAGE 40

WALL EXTRUSION

PAGE 41

WALKOVER EXTRUSION

PAGE 42

STAIR EXTRUSION

PAGE 43

“ Meridian Electrical have built up an excellent working relationship with Ledridge Lighting; with expertise, quick response estimates, unbeatable quality and value we look no further. From small domestic jobs to large commercial solutions, when it comes to LED there's only one place we call. ”

Adrian Flude, Meridian Electrical Contracting LTD



STANDARD PROFILE

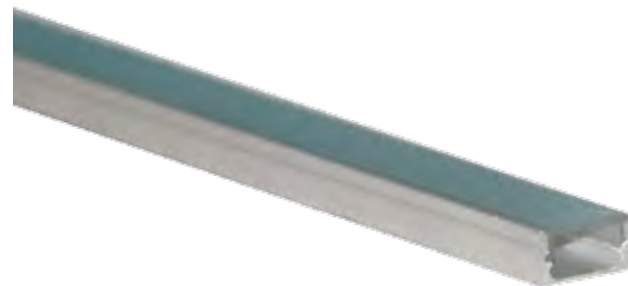
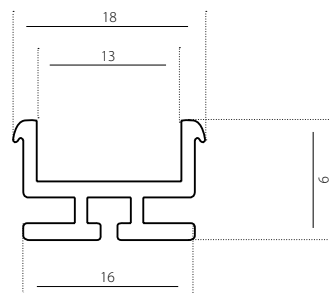
Standard profile extrusion fits easily and quickly to protect your LED ribbon and act as a heat sink to extend the LED ribbons life. Easy to clean and maintain, it gives a professional finish to any scheme.

SPECIFICATION

Dimensions	9 x 18mm
Length	2m
Material	Anodized aluminum

PART CODES

Extrusion	EXT-VS-2M
Opal diffuser	EXT-VS-OPC
Clear diffuser	EXT-VS-CLC
End cap	EXT-VS-EC
Fixing clip	EXT-VS-FC



COMPACT PROFILE

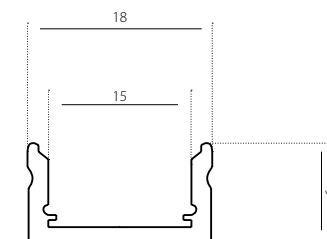
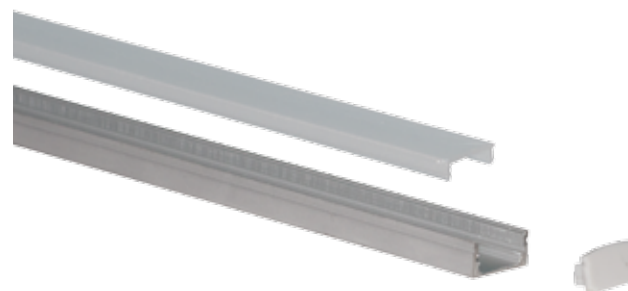
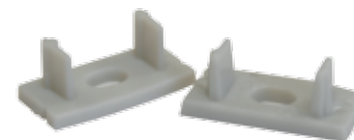
If you have a narrow or small space but would still like to fit LED ribbon, specify our compact profile extrusion. Small but beautifully formed; it has all the same benefits of our other extrusions, but can be installed in the most challenging of spaces.

SPECIFICATION

Dimensions	9 x 18mm
Length	2.5m
Material	Anodized aluminum

PART CODES

Extrusion & frosted cover	EXT-CP-2.5M-FRC
End cap	EXT-CP-EC



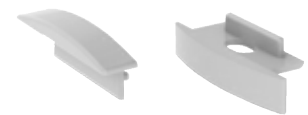


7MM RECESSED

The 7mm Recessed LED extrusion is designed to be recessed into a channel for a sleek finish, perfect for use under kitchen cabinets and worktop edges. With it's low profile it is possible to create a stunning effect between tiling in kitchens and bathrooms. This extrusion is great for our lower wattage LED ribbons, such as the LED48 range. Perfect as a heat-sink housing for LEDs.

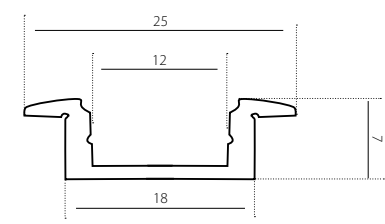
SPECIFICATION

Dimensions	7 x 25mm
Length	2m
Material	Anodized aluminum



PART CODES

Extrusion & frosted cover	EXT-RC7-2M-FRC
Extrusion & clear cover	EXT-RC7-2M-CLC
End cap	EXT-RC7-EC

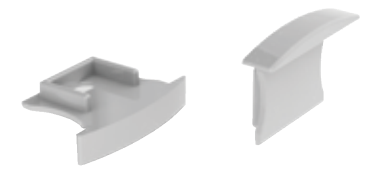


15MM RECESSED

The 15mm Recessed LED extrusion is ideal for use with LED ribbon up to 12mm wide. With the low profile this extrusion is great for our lower and medium power LED ribbons, such as the LED48, LED72 and LED96 ranges. Perfect as a heat-sink housing for LEDs.

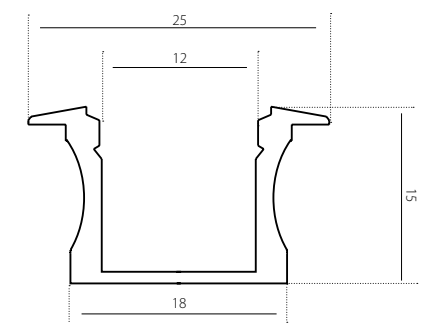
SPECIFICATION

Dimensions	15 x 25mm
Length	2m
Material	Anodized aluminum



PART CODES

Extrusion & frosted cover	EXT-RC15-2M-FRC
Extrusion & clear cover	EXT-RC15-2M-CLC
End caps	EXT-RC15-EC





52MM RECESSED

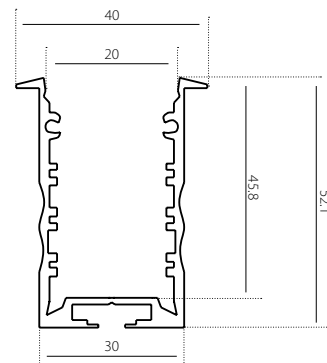
The 52mm Recessed LED extrusion is ideal for use with LED ribbon up to 12mm wide. This extrusion can be used to provide a more diffused effect as the ribbon is set deep into the extrusion disguising the spotting of the individual LED chips. It's a superb extrusion for a high output ribbon to provide an intense form of illumination. Perfect as a heat-sink housing for LEDs.

SPECIFICATION

Dimensions	52.1 x 40mm
Length	2m
Material	Anodized aluminum

PART CODES

Extrusion & frosted cover	EXT-RC52-2M-FRC
Extrusion & clear cover	EXT-RC52-2M-CLC
End cap	EXT-RC52-EC



45° ANGLED

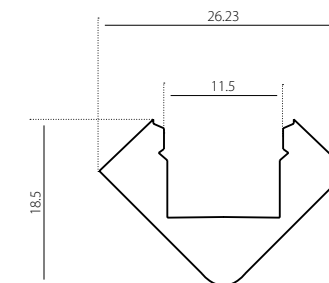
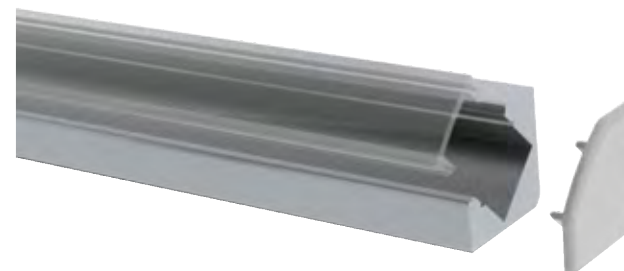
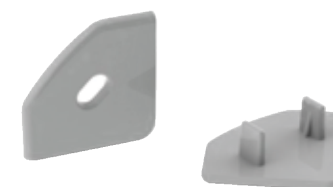
The 45° angled extrusion can be used when you need illumination directed at a surface rather than simply up or down. It's extremely popular with kitchen fitters for use under cabinets to provide a light source for work surfaces. The aluminium construction makes it perfect as a heat-sink housing for LEDs.

SPECIFICATION

Dimensions	17.5 x 26.2mm
Length	2m
Material	Anodized aluminum

PART CODES

Extrusion & frosted cover	EXT-A45-2M-FRC
Extrusion & clear cover	EXT-A45-2M-CLC
End cap	EXT-A45-EC
Fixing clip	EXT-A45-FC





ROUND

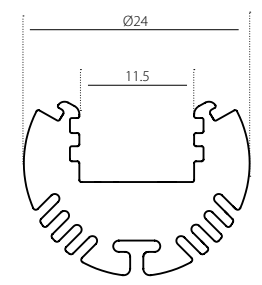
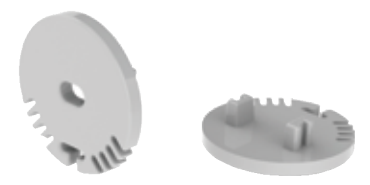
This round extrusion can turn simple and cost effective LED ribbon into a stunning picture light to highlight artwork or photography, or a truly unique illuminated clothes rail for use inside a wardrobe. It can even be suspended in hallways to create a fabulous feature rail to hang your coats with style.

SPECIFICATION

Dimensions	Ø24mm
Length	2m
Material	Anodized aluminum

PART CODES

Extrusion & frosted cover	EXT-RO-2M-FRC
Extrusion & clear cover	EXT-RO-2M-CLC
End cap	EXT-RO-EC
Fixing clip	EXT-RO-FC



WALL

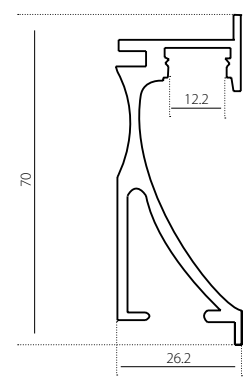
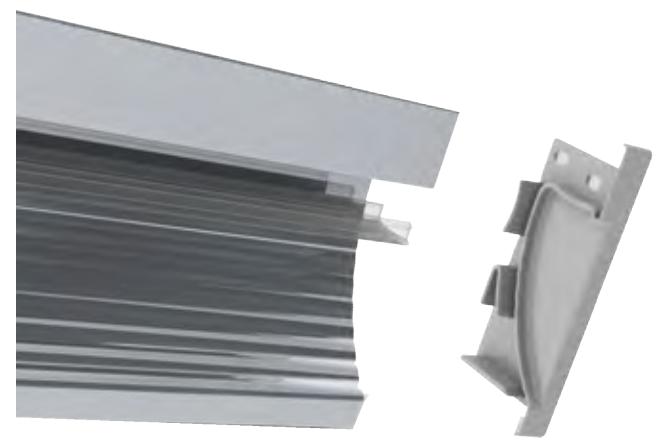
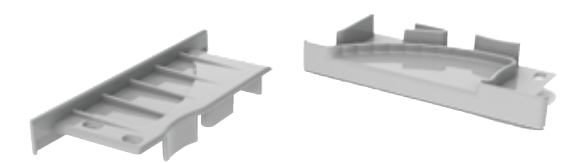
Recess into any wall to create a unique effect. With its rippled aluminium finish this extrusion can be used to add character to any space. They can be positioned to either up-light or down-light a surface. Vary the brightness of the internal LED ribbon to suit your individual lighting scheme.

SPECIFICATION

Dimensions	26.2 x 70mm
Length	2m
Material	Anodized aluminum

PART CODES

Extrusion & frosted cover	EXT-WP-2M-FRC
Extrusion & clear cover	EXT-WP-2M-CLC
End cap	EXT-WP-EC





WALKOVER

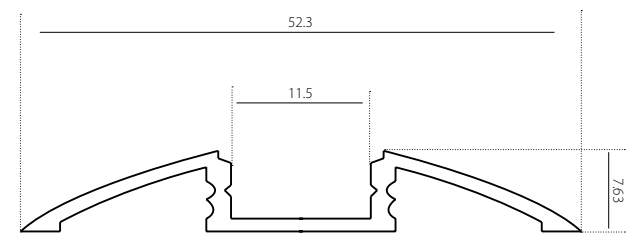
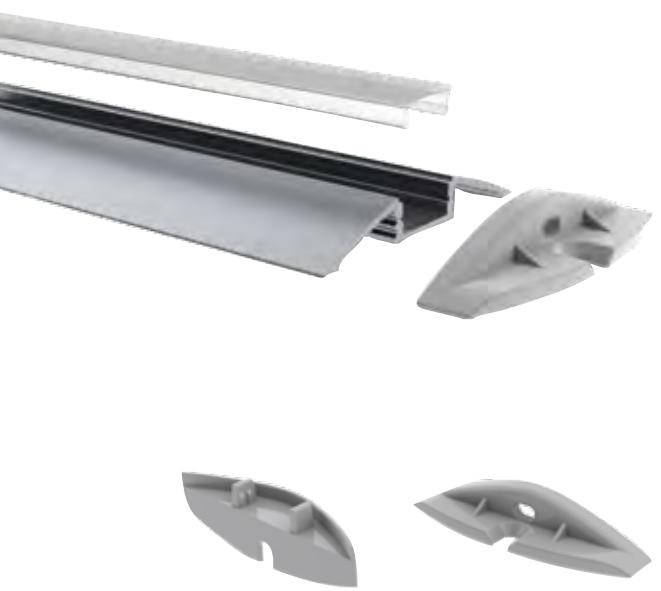
Walkover extrusions are hard wearing and versatile; they can be used to highlight walkways or a threshold between doorways, anywhere where you want to draw attention to a floor space or to identify different spaces in an open plan setting.

SPECIFICATION

Dimensions	7.63 x 52.3mm
Length	2m
Material	Anodized aluminum

PART CODES

Extrusion & frosted cover	EXT-WO-2M-FRC
Extrusion & clear cover	EXT-WO-2M-CLC
End cap	EXT-WO-EC



STAIR

Create drama by illuminating the edge of stair treads with our stair extrusion, perfect for situations where you want to highlight a beautiful stairwell or bring a sense of space and light to a dark hallway.

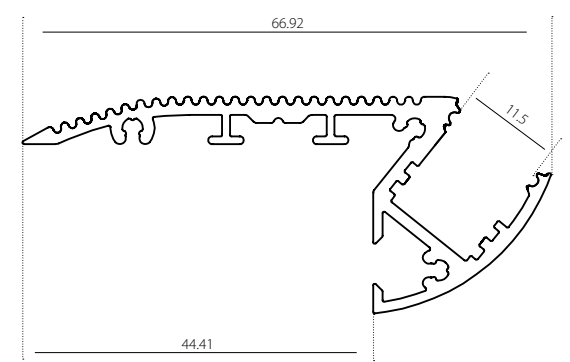
This is a favourite for commercial installations, not only are they stylish and eye-catching but they also add a safety element to a scheme.

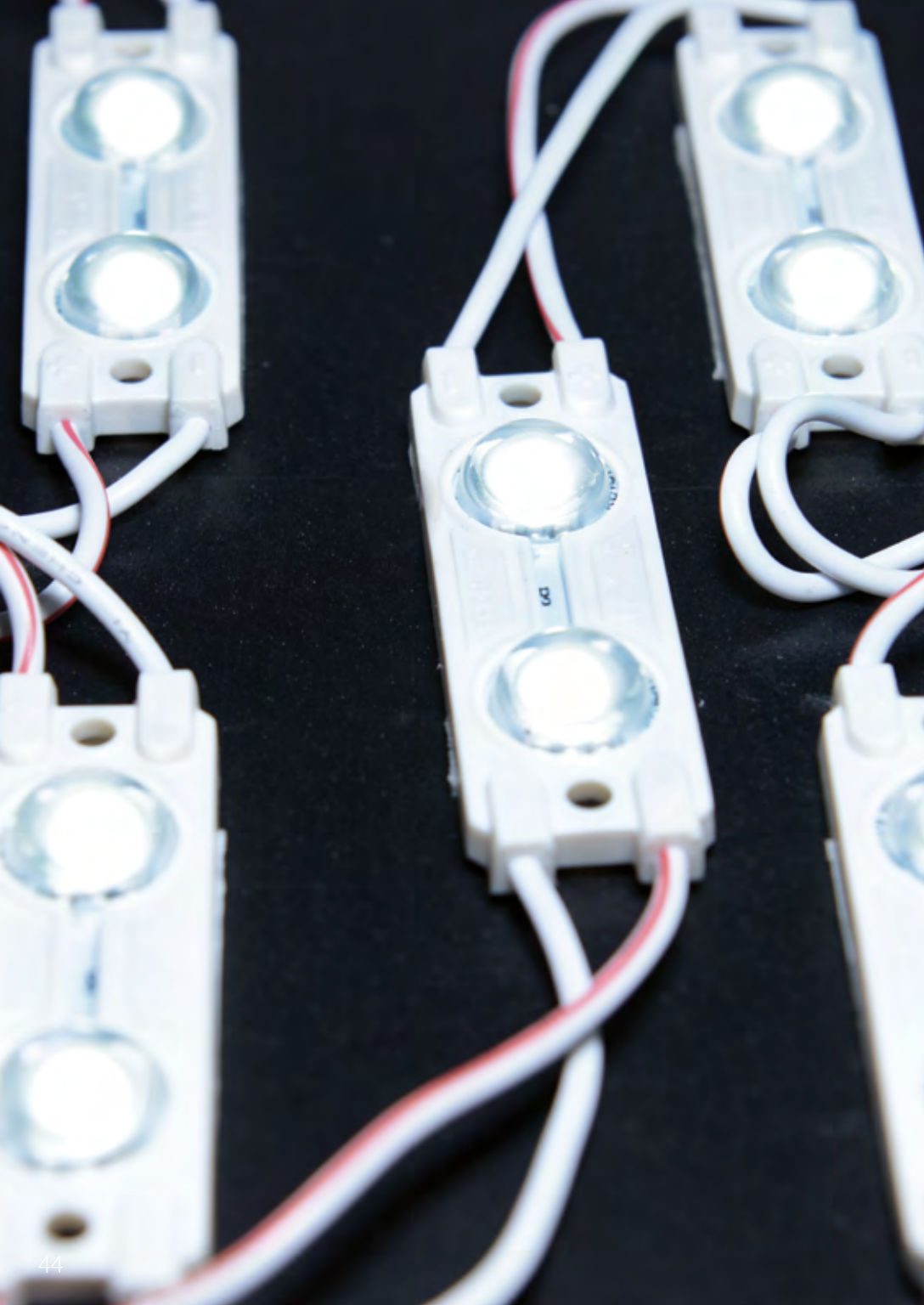
SPECIFICATION

Dimensions	66 x 27.5mm
Length	2m
Material	Anodized aluminum

PART CODES

Extrusion & frosted cover	EXT-STA-2M-FRC
Extrusion & clear cover	EXT-STA-2M-CLC
End cap	EXT-STA-EC





LED LINK MODULES

3528 STANDARD MODULES

PAGE 46

5050 STANDARD MODULES

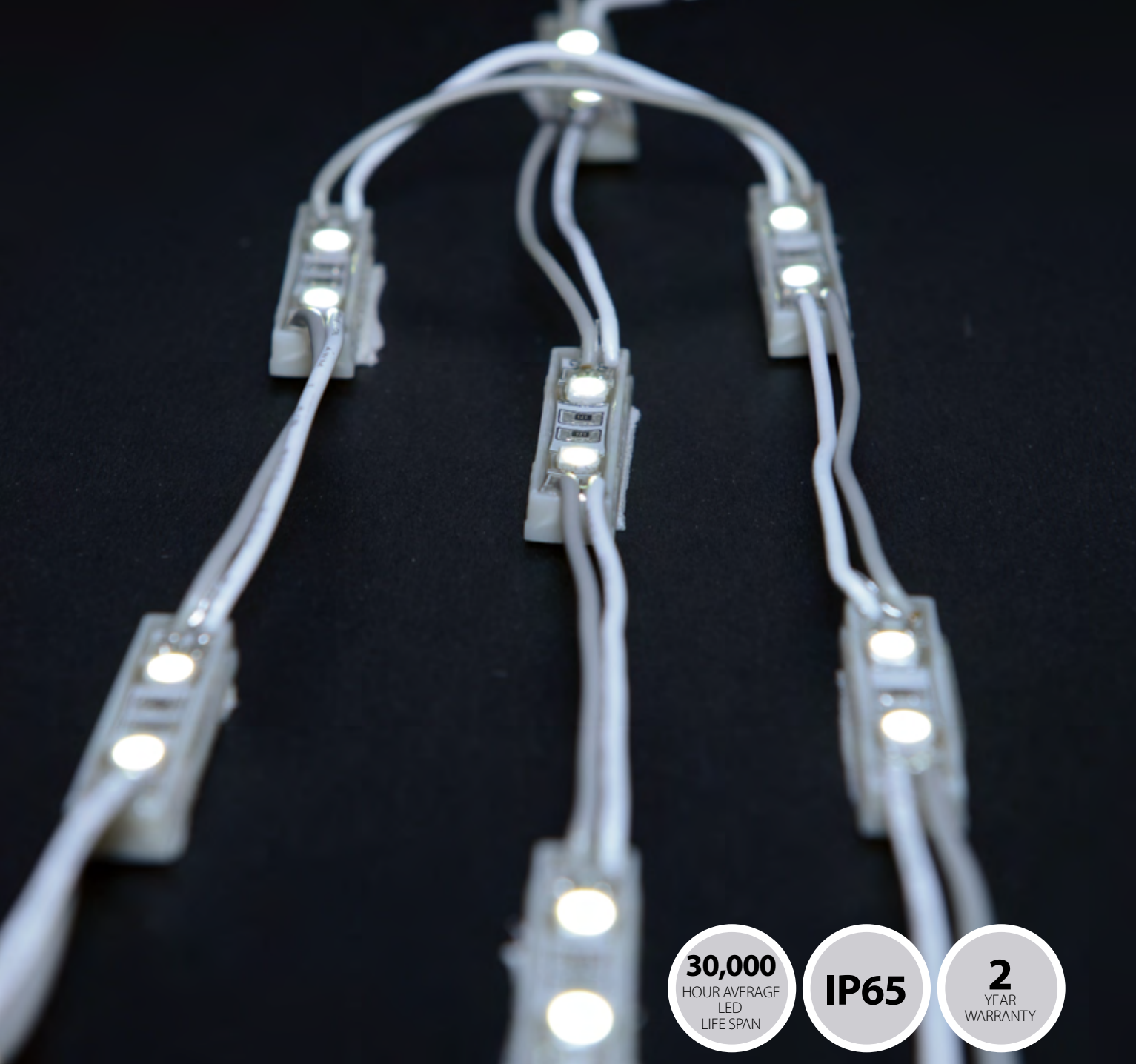
PAGE 48

5050 PREMIUM MODULES

PAGE 50

“ I have worked with Ledridge Lighting closely over a number of years to deliver LED solutions for high profile clients. Ledridge have taken ownership of the design and specification of various bespoke projects and always delivered on time and on budget. I have always found them to be very professional, accommodating and knowledgeable. ”

Mark Lunn, City Electrical Factors (Chelmsford Branch)



30,000
HOUR AVERAGE
LED
LIFE SPAN

IP65

2
YEAR
WARRANTY



3528 STANDARD MODULES

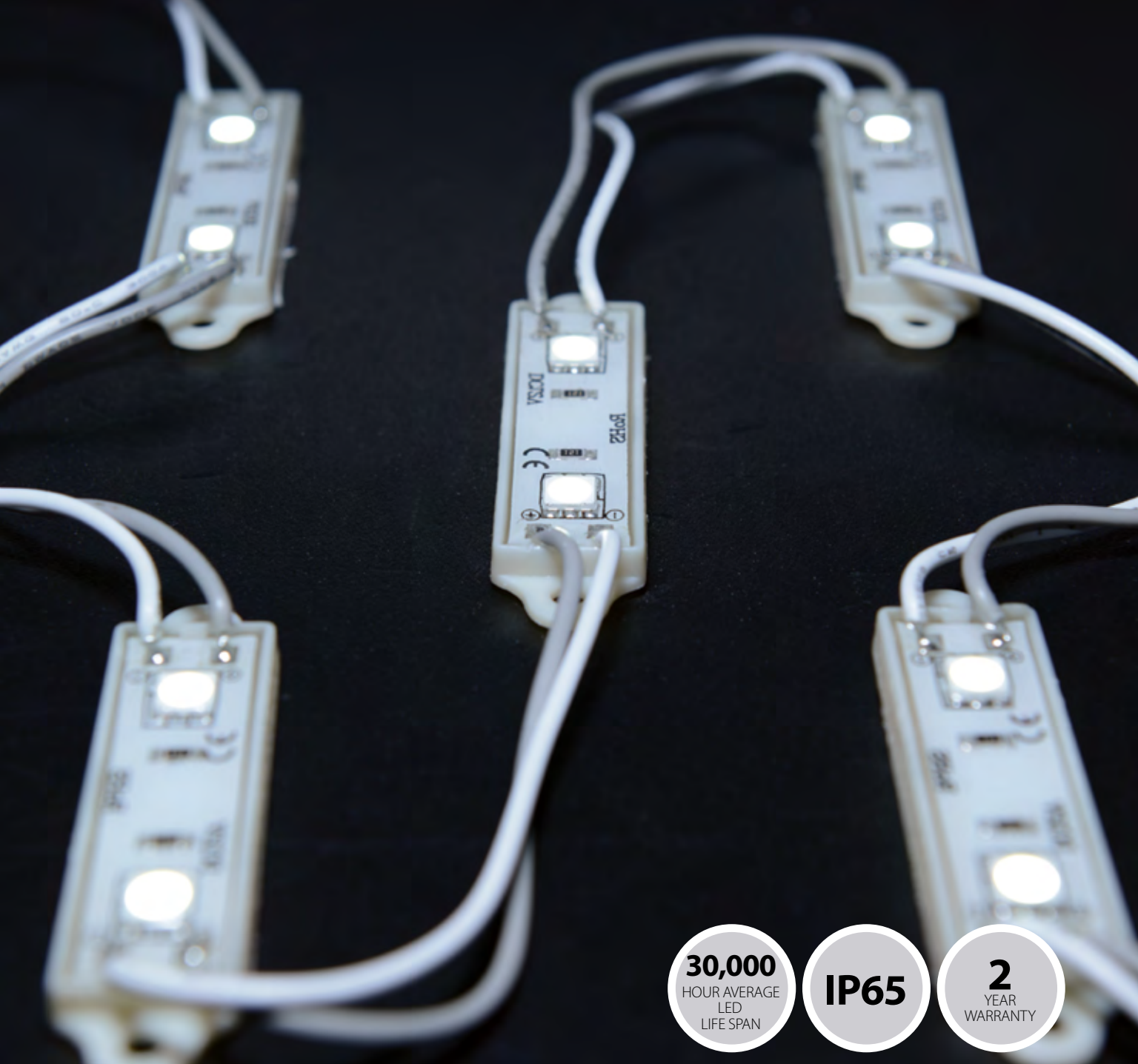
Ledridge 3528 Standard Modules are designed to be the versatile solution for your interior or exterior signage.

3528 Standard Modules are perfect for use in small, intricate signage where larger LED modules simply will not fit.

Ledridge 3528 Standard Modules are robust, durable and provide a generous output, despite their modest size.

TECHNICAL SPECIFICATIONS

LED QTY.	2	3	4
PART CODE	SM3528-2LED	SM3528-3LED	SM3528-4LED
INPUT VOLTAGE	DC 12V		
WATTAGE	0.3W	0.45W	0.6W
WIDTH	7mm	11.6mm	36mm
LENGTH	26mm	38.2mm	36mm
DEPTH	4mm		6mm
LUMENS	14lm	21lm	28lm
COLOUR TEMP.	2700K - 6000K		
BEAM ANGLE	140°		
MAXIMUM QTY. IN LINK	20		
WORKING TEMP.	-10°C TO 45°C		
IP RATING	IP65		
LED CHIP	3528 SMD		



30,000

HOUR AVERAGE
LED
LIFE SPAN

IP65

2

YEAR
WARRANTY

5050 STANDARD MODULES

Ledridge 5050 Standard Modles are a highly adaptable range of LED modules for internal or external signage.

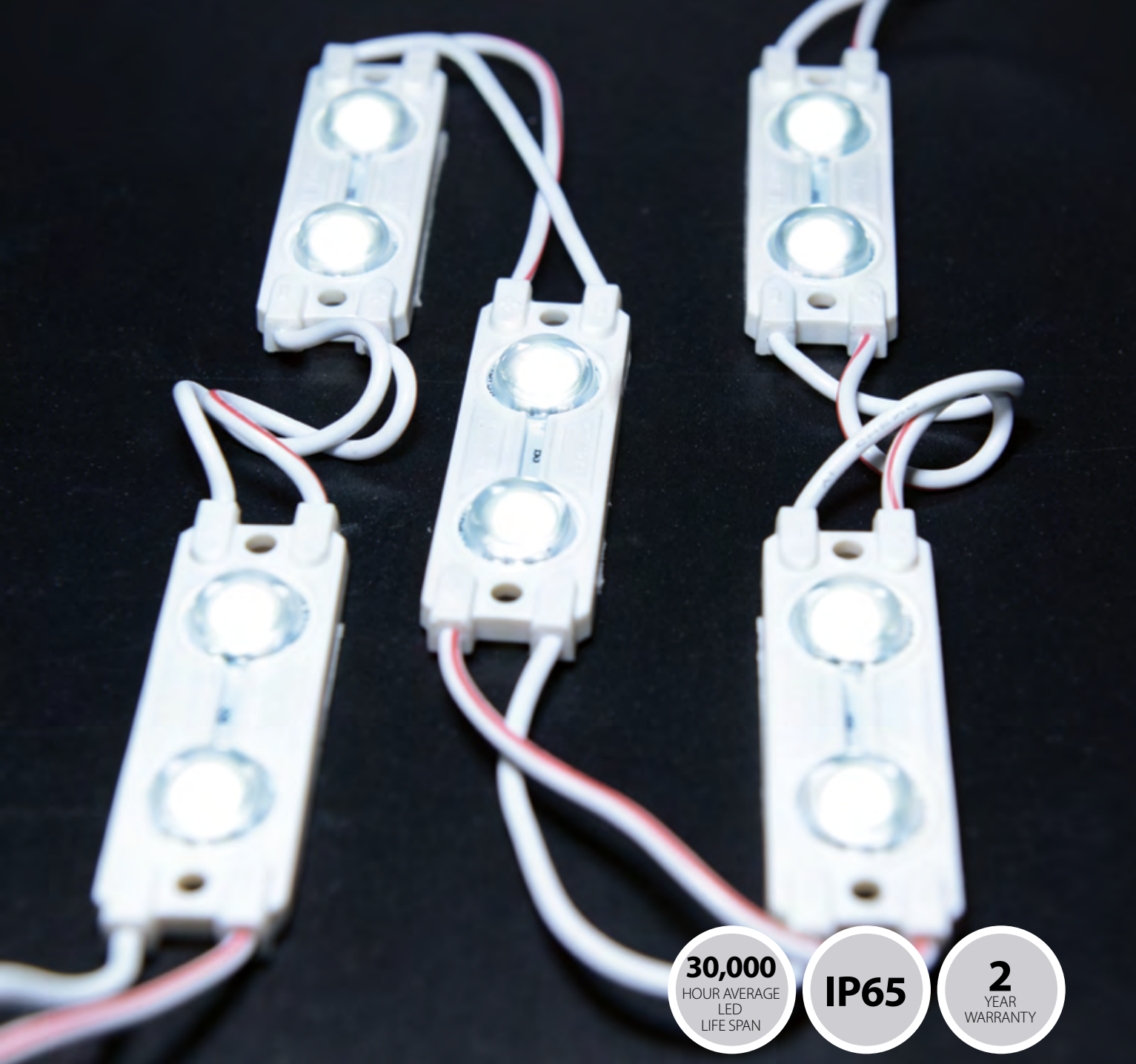
Available in three different configurations to suit all applications, 5050 Standard Modules are a cost-effective and reliable way of illuminating your displays.

TECHNICAL SPECIFICATIONS

LED QTY.	2	3	4
PART CODE	SM5050-2LED	SM5050-3LED	SM5050-4LED
INPUT VOLTAGE	DC 12V		
WATTAGE	0.48W	0.72W	0.96W
WIDTH	15mm		36mm
LENGTH	47mm	77.8mm	36mm
DEPTH	4.5mm	5mm	6mm
LUMENS	40lm	60lm	76lm
COLOUR TEMP.	2700K - 6000K		
BEAM ANGLE	140°		
MAXIMUM QTY. IN LINK	20		
WORKING TEMP.	-10°C TO 45°C		
IP RATING	IP65		
LED CHIP	5050 SMD		



LED DRIVERS
PAGES 58 - 59



5050 PREMIUM MODULES

Ledridge 5050 Premium Modules offer the same lumen output as our 5050 Standard range but are incorporated into an injection-moulded body for a superior finish.

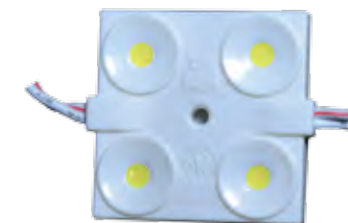
5050 Premium Modules are perfect in deeper signage where traditional LED modules are not bright enough to give the required illumination.

Alternatively 5050 Premium Modules can be used to provide even higher illumination in standard-depth lettering.

Available in three different configurations to suit all applications.

TECHNICAL SPECIFICATIONS

LED QTY.	2	3	4
PART CODE	SMI5050-2LED	SMI5050-3LED	SMI5050-4LED
INPUT VOLTAGE	DC 12V		
WATTAGE	0.48W	0.72W	0.96W
WIDTH	15mm		36mm
LENGTH	47mm	77.8mm	36mm
DEPTH	4.5mm	5mm	6mm
LUMENS	40lm	60lm	76lm
COLOUR TEMP.	2700K - 6000K		
BEAM ANGLE	140°		
MAXIMUM QTY. IN LINK	20		
WORKING TEMP.	-10°C TO 45°C		
IP RATING	IP65		
LED CHIP	5050 SMD		





LED BACKLIGHT PANELS

LED BACKLIGHT PANELS

LED Backlight Panels are the perfect solution for interior illuminated panels, signage and lightbox applications. They are versatile, easy to assemble and are a simple off-the-shelf solution for light box illumination.

Using three different sizes of LED backlight panels it is easy to create a custom sized lighting board from 75 x 75 mm to 600 x 1200 mm (larger sizes can easily be accommodated by installing multiple units parallel to each other) in increments of 75 mm.

Every LED Backlight Panel features honeycomb wiring assembly and installation is easy using the connectors included in your kit.

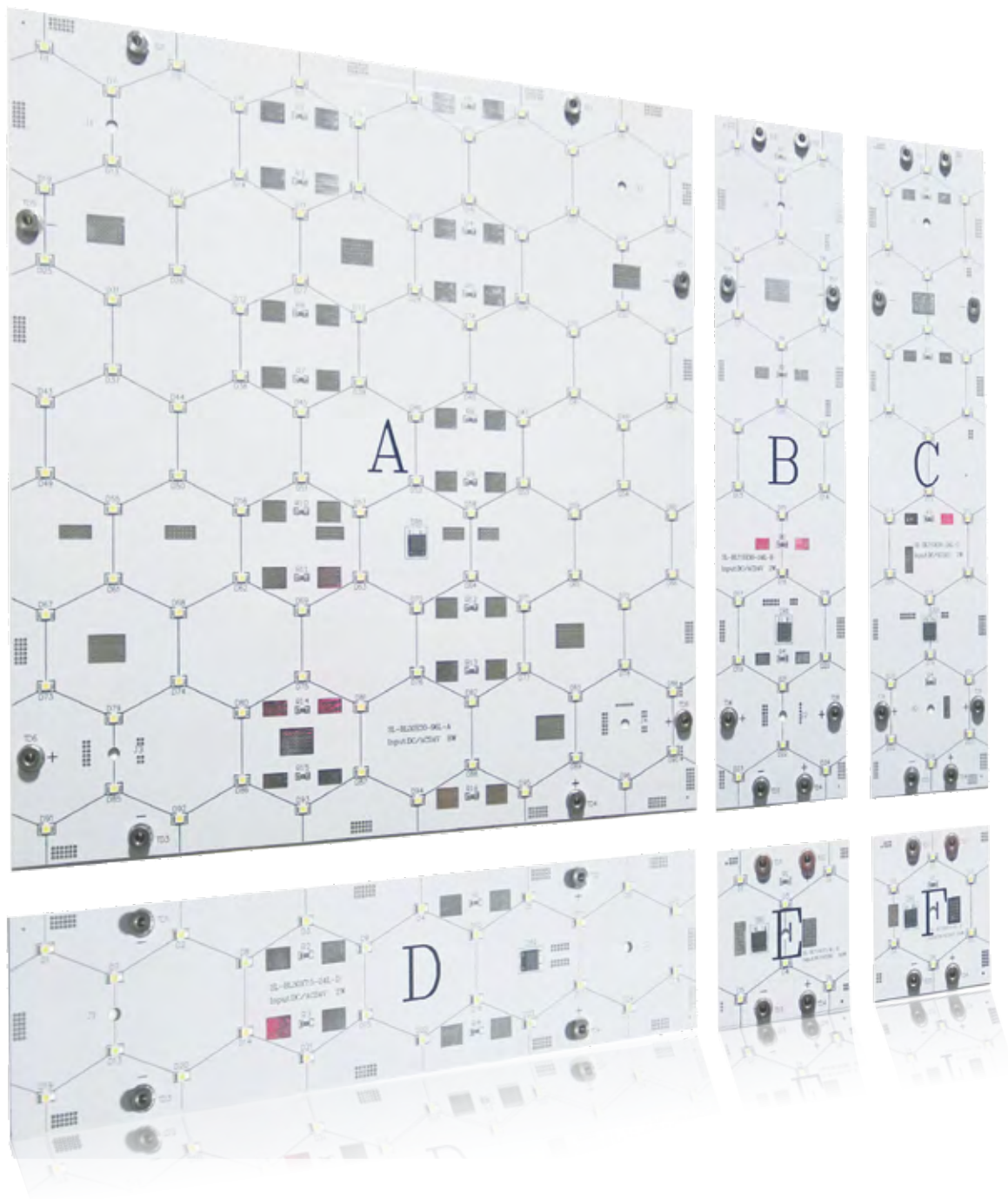
LED Backlight Panels can be screwed straight onto the surface of a light box and can also be mounted back-to-back for use in a double-sided light box.

For a full tutorial video on how to assemble LED Backlight Panels please visit our website by scanning the QR code with your smart device.



“ I have a stock of backlit panels that can be re-configured for each job in the size required. It's incredibly cost effective and produces a consistent and adaptable form of lighting that has proved extremely popular with all of the designers I work with.”

Simon Lazell, Zell Exhibitions



TECHNICAL SPECIFICATIONS

LED QTY.	A	B	C	D	E	F
PART CODE	BLP3527-A	BLP3527-B	BLP3527-C	BLP3527-D	BLP3527-E	BLP3527-F
INPUT VOLTAGE	DC 24V					
WATTAGE	8W	2W			0.6W	
WIDTH	300mm	75mm		300mm	75mm	
LENGTH	300mm	300mm		75mm		
DEPTH	10mm					
LUMENS	600lm	150lm			40lm	
COLOUR TEMP.	4000K / 6000K					
BEAM ANGLE	140°					
WORKING TEMP.	-10°C TO 45°C					
IP RATING	IP20					
LED CHIP	3527 SMD					
LED LIFE	20000 hours					

30,000
HOUR AVERAGE
LED
LIFE SPAN

2
YEAR
WARRANTY

LED DRIVERS
PAGES 58 - 59





LED DRIVERS & INTERFACES

STANDARD LED DRIVER

PAGE 58

IP67 LED DRIVER

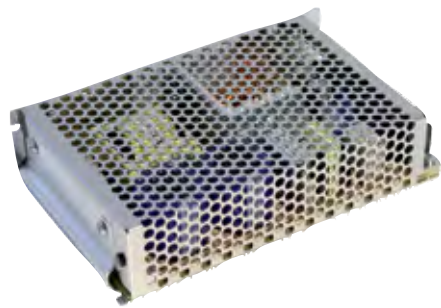
PAGE 59

0-10V DIMMER INTERFACE

PAGE 60

DALI DIMMER INTERFACE

PAGE 61



STANDARD LED DRIVER

2
YEAR
WARRANTY

MODEL		RS-25-12	RS-50-12	RS-100-12	RS-150-12	SP-200-12	SP-320-12
OUTPUT	DC VOLTAGE	12V					
	RATED CURRENT	2.1A	4.2A	8.5A	12.5A	16.7A	25A
	CURRENT RANGE	0 ~ 2.1A	0 ~ 4.2A	0 ~ 8.5A	0 ~ 12.5A	0 ~ 16.7A	0 ~ 25A
	RATED POWER	25.2W	50.4W	102W	150W	200.4W	312W
INPUT	VOLTAGE RANGE	88 ~ 264VAC 125 ~ 373DC			88 ~ 132VAC / 176 ~ 264VAC 248 ~ 373VDC	85 ~ 264VAC / 120 ~ 370VDC	88 ~ 264VAC / 124 ~ 370VDC
	FREQUENCY RANGE	47 ~ 63Hz					
	AC CURRENT	0.7A/115VAC 0.4A/230VAC	1.3A/115VAC 0.8A/230VAC	2.5A/115VAC 1.5A/230VAC	3A/115VAC 2A/230VAC	3.5A/115VAC 1.7A/230VAC	5A/115VAC 2.5A/230VAC
	INRUSH CURRENT (MAX)	Cold start 30A/230VAC	Cold start 33A/230VAC	Cold Start 40A/230VAC	Cold start 40A/230vac	Cold start 40A/230VAC	Cold start 40A/230VAC
WORKING TEMPERATURE		-25 ~ 70°C					
DIMENSIONS		79 x 51 x 28mm	99 x 97 x 36mm	159 x 97 x 38mm	199 x 98 x 38mm	199 x 99 x 50mm	215 x 115 x 50mm
MODEL		RS-25-24	RS-50-24	RS-100-24	RS-150-24	SP-200-24	SP-320-24
OUTPUT	DC VOLTAGE	24V					
	RATED CURRENT	1.1A	2.2A	4.5A	6.5A	8.4A	13A
	CURRENT RANGE	0 ~ 1.1A	0 ~ 2.2A	0 ~ 4.5A	0 ~ 6.5A	0 ~ 8.4A	0 ~ 13A
	RATED POWER	26.4W	52.8W	108W	156W	201.6W	312W
INPUT	VOLTAGE RANGE	88 ~ 264VAC 125 ~ 373DC			88 ~ 132VAC / 176 ~ 264VAC 248 ~ 373VDC	85 ~ 264VAC / 120 ~ 370VDC	88 ~ 264VAC / 124 ~ 370VDC
	FREQUENCY RANGE	47 ~ 63Hz					
	AC CURRENT	0.7A/115VAC 0.4A/230VAC	1.3A/115VAC 0.8A/230VAC	2.5A/115VAC 1.5A/230VAC	3A/115VAC 2A/230VAC	3.5A/115VAC 1.7A/230VAC	5A/115VAC 2.5A/230VAC
	INRUSH CURRENT (MAX)	Cold start 30A/230VAC	Cold start 33A/230VAC	Cold Start 40A/230VAC	Cold start 40A/230vac	Cold start 40A/230VAC	Cold start 40A/230VAC
WORKING TEMPERATURE		-25 ~ 70°C					
DIMENSIONS		79 x 51 x 28mm	99 x 97 x 36mm	159 x 97 x 38mm	199 x 98 x 38mm	199 x 99 x 50mm	215 x 115 x 50mm

IP67 LED DRIVER

IP67

2
YEAR
WARRANTY



MODEL		LPH-18-12	LPV-20-12	LPV-35-12	LPV-60-12	LPV-100-12
OUTPUT	DC VOLTAGE	12V				
	RATED CURRENT	1.5A	1.67A	3A	4A	8.5A
	CURRENT RANGE	0 ~ 1.5A	0 ~ 1.67A	0 ~ 3A	0 ~ 4A	0 ~ 8.5A
	RATED POWER	18W	20W	36W	60W	102W
INPUT	VOLTAGE RANGE	180 ~ 264VAC	90 ~ 264VAC		90 ~ 264VAC 127 ~ 370VDC	
	FREQUENCY RANGE	47 ~ 63Hz				
	AC CURRENT	0.3A/230VAC	0.55A/115VAC 0.35A/230VAC	1.1A/115VAC / 0.7A/230VAC	1.2A/115VAC 1A/230VAC	2.2A/1115VAC 1.2A/230VAC
	INRUSH CURRENT (MAX)	Cold start 50A/230VAC	Cold start 35A/115VAC 70A/230VAC	Cold Start 30A/115VAC / 60A/230VAC		Cold start 30A/115AVC 75A/230VAC
WORKING TEMPERATURE		-25 ~ 70°C	-30 ~ 70°C	-30 ~ 75°C	-30 ~ 70°C	-25 ~ 70°C
DIMENSIONS		140 x 30 x 20mm	118 x 35 x 26mm	148 x 40 x 30mm	162.5 x 42.5 x 32mm	190 x 52 x 37mm

MODEL		LPH-18-24	LPV-20-24	LPV-35-24	LPV-60-24	LPV-100-24
OUTPUT	DC VOLTAGE	24V				
	RATED CURRENT	0.75A	0.74A	1.5A	2.5A	4.2A
	CURRENT RANGE	0 ~ 0.75A	0 ~ 0.84A	0 ~ 1.5A	0 ~ 2.5A	0 ~ 4.2A
	RATED POWER	18W	20.2W	36W	60W	100.8W
INPUT	VOLTAGE RANGE	180 ~ 264VAC	90 ~ 264VAC		90 ~ 264VAC 127 ~ 370VDC	
	FREQUENCY RANGE	47 ~ 63Hz				
	AC CURRENT	0.3A/230VAC	0.55A/115VAC 0.35A/230VAC	1.1A/115VAC / 0.7A/230VAC	1.2A/115VAC 1A/230VAC	2.2A/115VAC 1.2A/230VAC
	INRUSH CURRENT (MAX)	Cold start 50A/230VAC	Cold start 35A/115VAC 70A/230VAC	Cold Start 30A/115VAC / 60A/230VAC	Cold start 60A (twidh=525μs measured at 50% Ipeak) at 230VAC	Cold start 30A/115VAC 75A/230VAC
WORKING TEMPERATURE		-25 ~ 70°C	-30 ~ 70°C	-30 ~ 75°C	-30 ~ 70°C	-25 ~ 70°C
DIMENSIONS		140 x 30 x 20mm	118 x 35 x 26mm	148 x 40 x 30mm	162.5 x 42.5 x 32mm	190 x 52 x 37mm

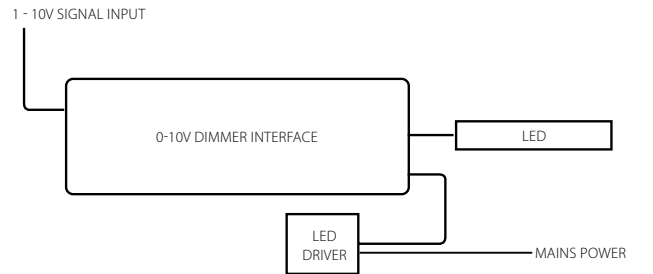


0-10V DIMMER INTERFACE

The Ledridge 0-10V Dimmer Interface unit allows you to confidently dim your 12v or 24v LED product. The dimmer interface is wired in sequence after a standard or IP67 non-dimmable driver.

The 0-10v dimmer interface provides a much smoother and more reliable dimming range than a conventional dimmable LED driver and is the ideal solution for dimming Ledridge flexible ribbons.

MODEL	LLDIMU0-10V
SIGNAL INPUT	1 - 10V
INPUT VOLTAGE	12/24V
MAX CURRENT	8A
OUTPUT POWER	96W (12V) 192W (24V)
WORKING TEMPERATURE	-10 ~ 50°C
DIMENSIONS	82 x 33 x 20mm

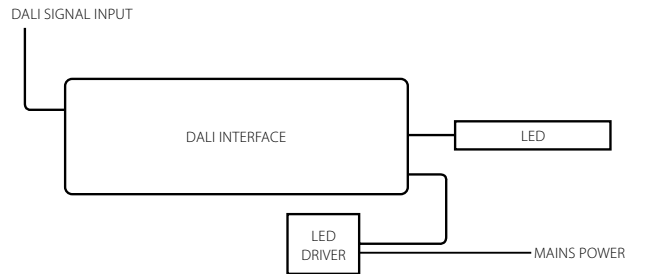


DALI INTERFACE

The Ledridge Dali Interface unit allows you to confidently dim your 12v or 24v LED product on your new or existing Dali system. The dimmer interface is wired in sequence after a standard or IP67 non-dimmable driver.

The Ledridge Dali Interface is the ideal solution for dimming Ledridge flexible ribbons via Dali control.

MODEL	LLDIMUDALI
SIGNAL INPUT	DALI
INPUT VOLTAGE	12/24V
MAX CURRENT	8A
OUTPUT POWER	96W (12V) 192W (24V)
WORKING TEMPERATURE	-10 ~ 50°C
DIMENSIONS	158 x 50.5 x 34mm





LED COLOUR PERFECTION

100% UK manufactured and tested our Colour Perfection range of LED fixtures and fittings represents the best in the market, astounding quality with superb results guaranteed every time.

ADJUSTABLE LED SPOTLIGHT

RGB & RGBW COLOUR CHANGE
PAGE 66

STATIC COLOUR 230V DIMMABLE
PAGE 68

UP-DOWN LED SPOTLIGHT

RGB & RGBW COLOUR CHANGE
PAGE 72

STATIC COLOUR 230V DIMMABLE
PAGE 74

LED BATON

RGB COLOUR CHANGE
PAGE 78

LED MINI SPOT

RGB, RGBW & STATIC COLOUR
PAGE 82

LED RECESSED GROUND LIGHT

RGB & RGBW COLOUR CHANGE
PAGE 86

STATIC COLOUR 230V DIMMABLE
PAGE 88

LED DOWNLIGHT MODULE

RGB & RGBW COLOUR CHANGE
PAGE 90

DR12RGB DRIVER

PAGE 92

DR12RGBW DRIVER

PAGE 94

DR48RGBW DRIVER

PAGE 96

POWER VALUES

PAGE 98

CONNECTION INSTRUCTIONS

PAGE 99







ADJUSTABLE LED SPOTLIGHT

RGB & RGBW COLOUR

The 'Colour Perfection' Adjustable Spotlight is a stylish and effective, UK manufactured colour changing spotlight.

Ideal for use in pubs, clubs and entertainment venues, the Adjustable Spotlight is capable of changing the mood and ambience of any environment, with its vibrant and directional beam of light.

The RGBW version of the Adjustable Spotlight is the fitting for every occasion. It combines a static white LED and RGB colour changing LEDs to allow you to switch between a fixed white colour and full colour changing displays. RGBW also allows you to create soft pastel hues, which are not achievable using RGB on its own.

Supplied with 1.5m RJ45 plug connectivity for ease of use, the Adjustable Spotlight will work in perfect harmony with any other 'Colour Perfection' fitting or driver.

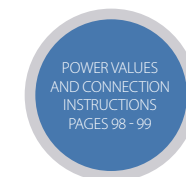
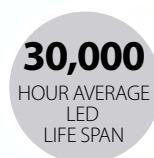
Our new range of 'Touch' RGB DMX controllers are the perfect way to control your new Adjustable Spotlight.



POWER VALUE

TECHNICAL SPECIFICATIONS

COLOUR TYPE	RGB	RGBW
PART CODE	LLCPAS6W/RGB	LLCPAS8W/RGBW
WATTAGE	6W	8W
INPUT CURRENT	500mA Constant Current	
CONNECTIVITY	Supplied with 1.5m RJ45 plug	
IP RATING	IP44	
WEIGHT	400g	
LED CHIP	Luxeon Z	
BEAM ANGLE	Supplied as 25° as standard. 15° and 40° available to order.	
LENGTH	170mm	
FINISH	Brushed stainless steel	
WARRANTY	3 Years	





ADJUSTABLE LED SPOTLIGHT

STATIC COLOUR 230V DIMMABLE

The ‘Colour Perfection’ Mains Adjustable Spotlight is a premium quality directional LED spotlight. With a durable and high-quality brushed stainless steel finish it is the perfect product to specify on your lighting projects.

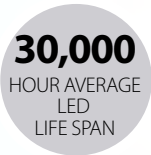
Our Mains Adjustable Spot is built using dimmable LEDs. Installation couldn’t be simpler as there’s no need for an LED driver, allowing you to simply wire them into your existing 230V dimming circuit and watch your environment come to life.

The Mains Adjustable Spotlight is available in both 2700k and 4000k to allow you to choose the perfect colour temperature to suit your application.

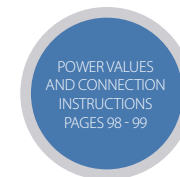
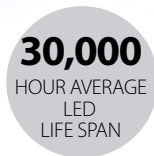
To create an even more dynamic environment try combining our Mains Adjustable Spotlight with our colour changing RGBW Adjustable Spotlight.

TECHNICAL SPECIFICATIONS

COLOUR TYPE	2700K	4000K
PART CODE	LLCPAS6W/2700	LLCPAS6W/4000
WATTAGE	6W	
INPUT VOLTAGE	230V	
LUMENS	Up to 410lm	
IP RATING	IP44	
WEIGHT	400g	
LED CHIP	Dimmable LED Chip	
BEAM ANGLE	Supplied as 35°	
LENGTH	170mm	
FINISH	Brushed stainless steel	
WARRANTY	3 Years	







UP-DOWN LED SPOTLIGHT

RGB & RGBW COLOUR



The 'Colour Perfection' LED Up-Down Spotlight is an elegant and tasteful LED colour changing wall light.

Emitting light both upwards and downwards the LED Up-Down Spotlight is capable of flooding a wall with dynamic and captivating colour changing displays.

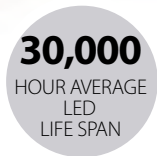
The RGBW version of the LED Up-Down Spotlight combines a static white LED and RGB colour changing LEDs, to allow you to switch between a fixed white colour and full colour changing displays. RGBW also allows you to create soft pastel hues which are not achievable using RGB on its own.

Supplied with 1.5m RJ45 plug connectivity for ease of use, the LED Up-Down Spotlight will work in perfect harmony with any other 'Colour Perfection' fitting or driver.

Our new range of 'Touch' RGB DMX controllers are the perfect way to control your new LED Up Down Spotlight.

TECHNICAL SPECIFICATIONS

COLOUR TYPE	RGB	RGBW
PART CODE	LLCPUD12W/RGB	LLCPUD16W/RGBW
WATTAGE	12W	16W
INPUT CURRENT	500mA Constant Current	
CONNECTIVITY	Supplied with 1.5m RJ45 plug	
IP RATING	IP44	
WEIGHT	525g	
LED CHIP	Luxeon Z	
BEAM ANGLE	Supplied as 25° as standard. 15° and 40°available to order.	
LENGTH	156mm	
FINISH	Brushed stainless steel	
WARRANTY	3 Years	



UP-DOWN LED SPOTLIGHT

STATIC COLOUR 230V DIMMABLE

The 'Colour Perfection' Mains LED Up-Down Spotlight is a sophisticated and stylish LED wall light, built with premium quality dimmable LEDs and finished in flawless brushed stainless steel.

Our Mains LED Up-Down Spotlight is built using dimmable mains-powered LEDs. Installation couldn't be simpler as there's no need for an LED driver, allowing you to simply wire them into your existing 230V dimming circuit.

The Mains LED Up-Down Spotlight is available in both 2700k and 4000k to allow you to choose the perfect colour temperature to suit your application.

To create an even more dynamic environment try combining our Mains LED Up-Down Spotlight with our colour changing RGBW Up-Down Spotlight.

TECHNICAL SPECIFICATIONS

COLOUR TYPE	2700K	4000K
PART CODE	LLCPUD12W/2700	LLCPUD12W/4000
WATTAGE	12W	
INPUT VOLTAGE	230V	
LUMENS	Up to 820lm	
IP RATING	IP44	
WEIGHT	525g	
LED CHIP	Dimmable LED Chip	
BEAM ANGLE	Supplied as 35°	
LENGTH	164mm	
FINISH	Brushed stainless steel	
WARRANTY	3 Years	





LED BATON

RGB COLOUR CHANGE

4
POWER VALUE
400MM

8
POWER VALUE
800MM

12
POWER VALUE
1200MM

The ‘Colour Perfection’ LED Baton is a hard-wearing and robust colour changing LED fixture designed to flood a wall or surface with light. This high-quality RGB baton is ideal for pubs, clubs and entertainment venues or other installations requiring a dramatic wall-wash of colour.

Available in three standard sizes the LED Baton is powered by single high output Luxeon K2 LEDs to ensure maximum output. The LED Baton is supplied with a 25x8 degree optic as standard; however 8 degree, and 25 degree optics are available to narrow or widen the beam of light.

Supplied with 1.5m RJ45 plug connectivity for ease of use, the LED Baton will work in perfect harmony with any other ‘Colour Perfection’ fitting or driver.

Our new range of ‘Touch’ RGB DMX controllers are the perfect way to control your new LED Baton.

The LED Baton is also supplied with mounting brackets for ease of installation.

TECHNICAL SPECIFICATIONS

LENGTH	400mm	800mm	1200mm
PART CODE IP 40	LLCPBL24W/RGB	LLCPBL48W/RGB	LLCPBL72W/RGB
PART CODE IP 66	LLCPBL24W-IP/RGB	LLCPBL48W-IP/RGB	LLCPBL72W-IP/RGB
WATTAGE	24W	48w	72W
INPUT CURRENT	500mA Constant Current		
CONNECTIVITY	Supplied with 1.5m RJ45 plug		
WEIGHT	575g	1150g	1725g
LED CHIP	Luxeon K2		
BEAM ANGLE	Supplied as 25x8° as standard. 8° and 25° available to order.		
FINISH	Aluminium		
WARRANTY	3 Years		







LED MINI SPOT

RGB, RGBW & STATIC COLOUR

The ‘Colour Perfection’ LED Mini Spot is a superior LED fixture made of high-grade brushed stainless steel. The LED Mini Spot is perfect for use as a kitchen plinth light or for use as a bathroom light or external decking light thanks to its robust IP66 rated body.

Available in static colour, RGB or RGBW; the LED Mini Spot guarantees complete colour consistency thanks to its world-renowned Luxeon Rebel LEDs.

The frosted filter lens is designed to give a flood effect to its intense beam of light. The LED Mini Spot is supplied with a 25 degree optic as standard, however 10 degree and 40 degree optics are available to order. Optional frost filters are also available.

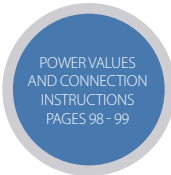
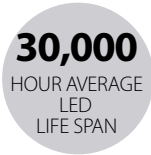
The static colour version of the LED Mini Spot is powered by a 12V or 24V DC, achieved using our Standard or IP rated LED drivers, whilst the RGB and RGBW version of the LED Mini Spot are Supplied with 1.5m RJ45 plug connectivity to connect to a ‘Colour Perfection’ driver and DMX controller.

Our new range of ‘Touch’ RGB DMX controllers are the perfect way to control your new RGB LED Mini Spot.



TECHNICAL SPECIFICATIONS

COLOUR TYPE	STATIC	RGB	RGBW
PART CODE	LLCPMS2W	LLCPMS6W/RGB	LLCPMS8W/RGBW
WATTAGE	2W	6W	8W
INPUT CURRENT	--	500mA Constant Current	
INPUT VOLTAGE	3V	--	
CONNECTIVITY	2-core cable	Supplied with 1.5m RJ45 plug	
IP RATING	IP66		
WEIGHT	100g		
LED CHIP	Luxeon	Luxeon Rebel	
BEAM ANGLE	Supplied as 25° as standard. 10° and 40° available to order.		
CUTOUT	Ø32mm		
FINISH	Brushed stainless steel		
WARRANTY	3 Years		







LED RECESSED GROUND LIGHT

RGB & RGBW COLOUR CHANGE



The ‘Colour Perfection’ LED Recessed Ground Light is a rugged, precision engineered LED Ground Light, which is ideal for interior or exterior use. This innovative ground light is designed to give maximum light output incorporated into a light fitting of exceptional build-quality.

Available in RGB or RGBW, the LED Recessed Ground Light is capable of producing rich and intense colours to change the mood of any location.

Durable enough to be used as a walk-over or drive-over ground light this LED fitting is perfect for applications requiring enhanced light output and exceptional durability.

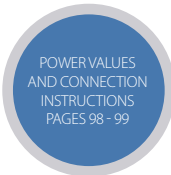
The LED Recessed Ground Light is supplied with a 25 degree lens as standard however 15 degree and 40 degree optics are available to order.

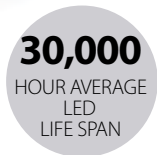
Supplied with 1.5m RJ45 plug connectivity for ease of use, the LED Recessed Ground Light will work in perfect harmony with any other ‘Colour Perfection’ fitting or driver.

Our new range of ‘Touch’ RGB DMX controllers are the perfect way to control your new LED Recessed Ground Light.

TECHNICAL SPECIFICATIONS

COLOUR TYPE	RGB	RGBW
PART CODE	LLCPGL6W/RGB	LLCPGL8W/RGBW
WATTAGE	6W	8W
INPUT CURRENT	500mA Constant Current	
CONNECTIVITY	Supplied with 1.5m RJ45 plug	
IP RATING	IP66	
WEIGHT	300g	
LED CHIP	Luxeon Z	
BEAM ANGLE	Supplied as 25° as standard. 15° and 40° available to order.	
CUTOUT	Ø92mm	
FINISH	Brushed stainless steel	
WARRANTY	3 Years	





LED RECESSED GROUND LIGHT

STATIC COLOUR 230V DIMMABLE

The 'Colour Perfection' Mains LED Recessed Ground Light is a fixed-colour recessed ground light built to the same uncompromising standards as its RGB and RGBW counterparts. The Mains LED Recessed Ground Light is perfect for internal or external use and is ideal as a walk-over or drive-over ground light.

Our Mains LED Recessed Ground Light is built using dimmable mains-powered LEDs. Installation couldn't be simpler as there's no need for an LED driver, allowing you to simply wire them into your existing 230V dimming circuit.

The Mains LED Recessed Ground Light is available in both 2700K and 4000K, allowing you to choose the perfect colour temperature to suit your application.

To create an even more dynamic environment try combining our Mains LED Recessed Ground Light with our colour changing RGBW LED Recessed Ground Light.

TECHNICAL SPECIFICATIONS

COLOUR TYPE	2700K	4000K
PART CODE	LLCPGL6W/2700	LLCPGL6W/4000
WATTAGE	6W	
INPUT VOLTAGE	230V	
LUMENS	Up to 410lm	
IP RATING	IP66	
WEIGHT	300g	
LED CHIP	Dimmable LED Chip	
BEAM ANGLE	Supplied as 35°	
CUTOUT	Ø92mm	
FINISH	Brushed stainless steel	
WARRANTY	3 Years	



LED DOWNLIGHT MODULE

RGB & RGBW COLOUR CHANGE



POWER VALUE

The 'Colour Perfection' LED Downlight is a spectacular colour changing LED downlight module packed full of the most innovative and exciting LED technology.

The LED Downlight is designed with an MR16 style body which can be housed in an MR16 fitting. It delivers perfect colour mixing and advanced full colour projection. Quite simply the 'Colour Perfection' LED Downlight is in a league of its own.

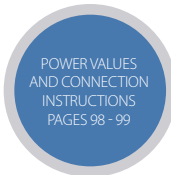
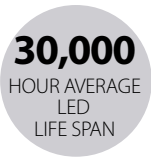
The LED Downlight is supplied with a 25 degree lens as standard, however 15 degree and 40 degree optics are available to order.

Supplied with 1.5m RJ45 plug connectivity for ease of use, the LED Downlight will work in perfect harmony with any other 'Colour Perfection' fitting or driver.

Our new range of 'Touch' RGB DMX controllers are the perfect way to control your new LED Downlight.

TECHNICAL SPECIFICATIONS

COLOUR TYPE	RGB	RGBW
PART CODE	LLCPDL6W/RGB	LLCPDL8W/RGBW
WATTAGE	6W	8W
INPUT CURRENT	500mA Constant Current	
CONNECTIVITY	Supplied with 1.5m RJ45 plug	
IP RATING	IP40	
WEIGHT	120g	
LED CHIP	Luxeon Z	
DIAMETER	Ø50mm	
FINISH	Anodised silver	
WARRANTY	3 Years	





DR12_{RGB} DRIVER

This ever-reliable RGB LED driver is built exclusively for the Colour Perfection LED Colour Changing range.

Built to uncompromising UK standards, the DR12RGB driver is built using advanced driver technology and ensures an even distribution of power between all units connected to the driver.

The DR12RGB has an inbuilt DMX receiver meaning that connectivity could not be easier. Simply connect your Colour Perfection product to the CP12RGB driver using RJ45 patch cables and bring your new products to life.

This driver has a Power Value of 12, meaning you can combine any RGB Colour Perfection products up to a maximum value of 12. See Colour Perfection product pages for Power Values.

Instant Colour Mode

The DR12RGB has a built in static colour or colour scroll scenes. This enables you to plug in your Colour Perfection products without the use of a DMX controllers and select a fixed colour or a simple colour changing scene.



MAXIMUM
POWER VALUE

TECHNICAL SPECIFICATIONS

PART CODE	LLCPDR12RGB
WATTAGE	54W
COLOUR	RGB
CURRENT	500 mA
IP RATING	IP20
WEIGHT	500g
CONNECTIVITY	1 x RJ45 socket
DATA	DMX 512
FINISH	Matt grey powder coating
CONSTRUCTION	1.2mm steel
INPUT VOLTAGE	90 - 256 V
WARRANTY	3 years





DR12RGBW DRIVER

This ever-reliable RGBW LED driver is built exclusively for the Colour Perfection LED Colour Changing range.

Built to uncompromising UK standards, the DR12RGBW driver is built using advanced driver technology and ensures an even distribution of power between all units connected to the driver.

The DR12RGBW has an inbuilt DMX receiver meaning that connectivity could not be easier. Simply connect your Colour Perfection product to the DR12RGBW driver using RJ45 patch cables and bring your new products to life.

The DR12RGBW driver can be used with any Colour Perfection RGB or RGBW product.

This driver has a Power Value of 12, meaning you can combine any RGB or RGBW Colour Perfection products up to a maximum value of 12. See Colour Perfection product pages for Power Values.

Instant Colour Mode

The DR12RGBW has a built in static colour, vivid colour scroll and pastel colour scroll scenes. With the built in microphone it is also possible to use the Sound to Light mode.

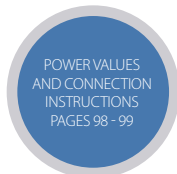
This enables you to plug in your Colour Perfection products without the use of a DMX controllers and select a fixed colour or a simple colour changing scene.

When connected to a DMX system, if the signal is lost the DR12RGBW will instantly revert to using the Instant Colour Mode selection of your choice.



TECHNICAL SPECIFICATIONS

PART CODE	LLCPDR12RGBW
WATTAGE	60W
COLOUR	RGBW
CURRENT	500 mA
IP RATING	IP20
WEIGHT	500g
CONNECTIVITY	1 x RJ45 socket
DATA	DMX 512
FINISH	Matt grey powder coating
CONSTRUCTION	1.2mm steel
INPUT VOLTAGE	90 - 256 V
WARRANTY	3 years





DR48RGBW DRIVER

48
MAXIMUM
POWER VALUE

This ever-reliable RGBW LED driver is built exclusively for the Colour Perfection LED Colour Changing range.

Built to uncompromising UK standards, the DR48RGBW driver is built using advanced driver technology and ensures an even distribution of power between all units connected to the driver.

The DR48RGBW has an inbuilt DMX receiver meaning that connectivity could not be easier. Simply connect your Colour Perfection product to the DR48RGBW driver using RJ45 patch cables and bring your new products to life.

The DR48RGBW driver can be used with any Colour Perfection RGB or RGBW product.

This driver has a Power Value of 48, meaning you can combine any RGB or RGBW Colour Perfection products up to a maximum value of 48. See Colour Perfection product pages for Power Values.

Instant Colour Mode

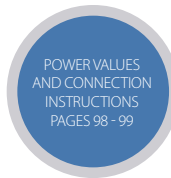
The DR148RGBW has a built in static colour, vivid colour scroll and pastel colour scroll scenes. With the built in microphone it is also possible to use the Sound to Light mode.

This enables you to plug in your Colour Perfection products without the use of a DMX controllers and select a fixed colour or a simple colour changing scene.

When connected to a DMX system, if the signal is lost the DR48RGBW will instantly revert to using the Instant Colour Mode selection of your choice.

TECHNICAL SPECIFICATIONS

PART CODE	LLCPDR48RGBW
WATTAGE	240W
COLOUR	4 X RGBW
CURRENT	500 mA
IP RATING	IP20
WEIGHT	980g
CONNECTIVITY	4 x RJ45 sockets
DATA	DMX 512
FINISH	Matt grey powder coating
CONSTRUCTION	1.2mm steel
INPUT VOLTAGE	90 - 256 V
WARRANTY	3 years



COLOUR PERFECTION POWER VALUES

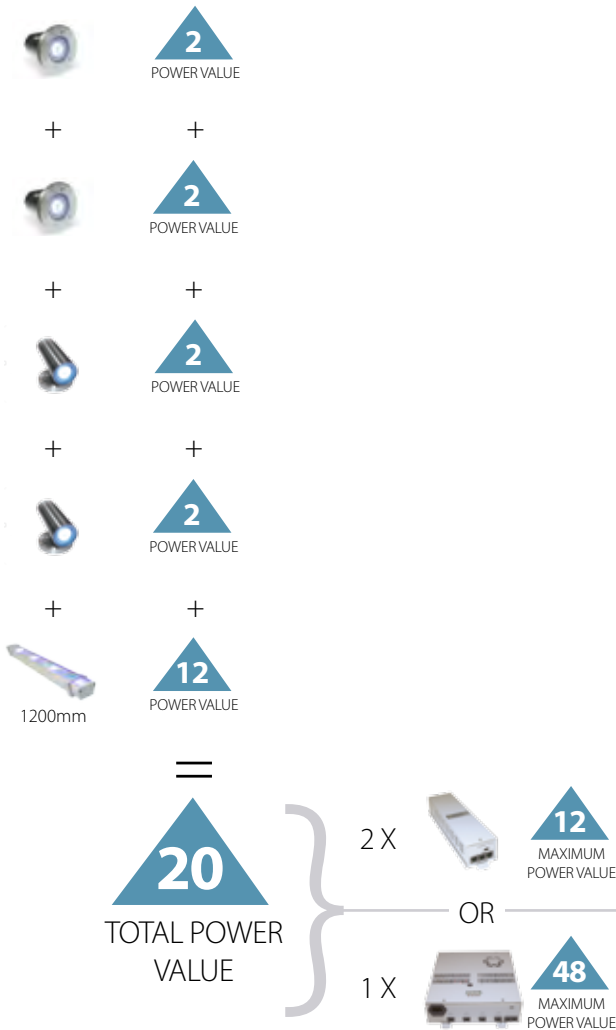
Each product in the Colour Perfection range has a Power Value which is used to determine the Colour Perfection driver to use and how many your installation will require.

The Power Value is indicated on the top right corner, above the technical details, in a blue triangle on each of the Colour Perfection products. This value is for 1 unit.



Simply add the Power Value's of each product together to work out the Total Power Value needed to run your installation.

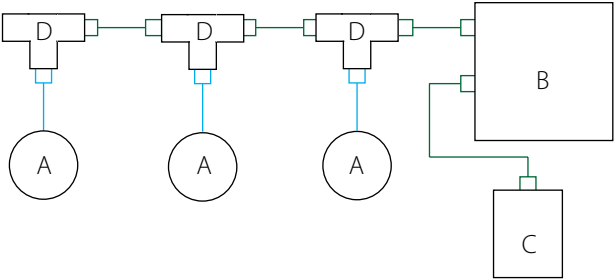
To work out how many Colour Perfection drivers you need just divide the Total Power Value by the Maximum Power Value of the selected driver.



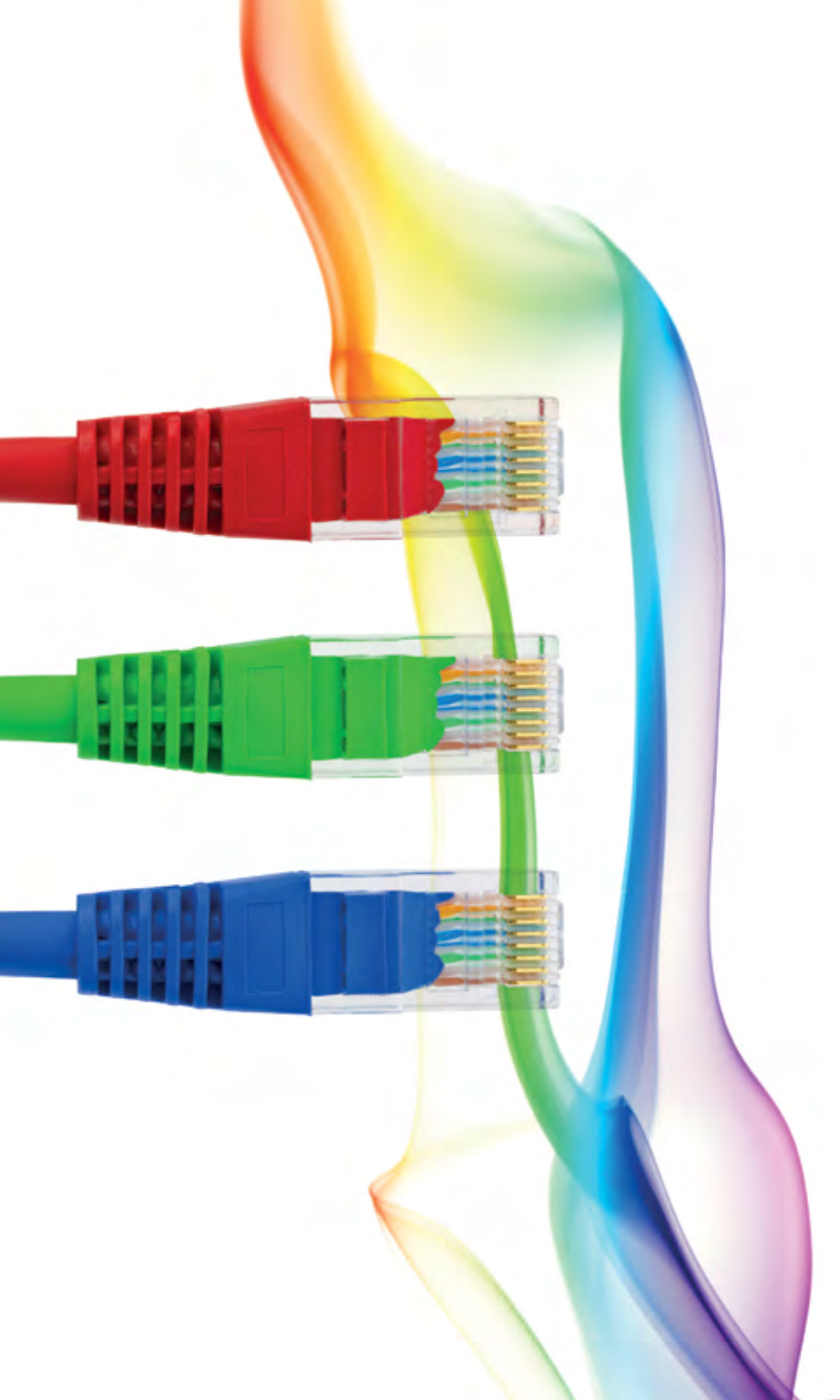
COLOUR PERFECTION WIRING & INSTALLATION

The Colour Perfection range is simple and easy to install as the whole installation uses RJ45 connections.

Each fitting is supplied with a 1.5m RJ45 lead and a T-piece connector. Simply create a chain of fittings by connecting the supplied RJ45 plug to the T-piece connectors. Then connect these two T-pieces via an additional RJ45 lead, which can be purchased separately.



- A RGB / RGBW Colour Perfection LED
- B Colour Perfection Driver
- C RGB DMX Controller
- D T-piece connector
- 1.5m RJ45 lead supplied with each fitting
- Additional RJ45 lead (please purchase your required lengths to suit your installation)



LED CONTROLLERS

TOUCH CONTROLLERS

ADVANCED COLOUR AND DIMMING CONTROLLERS
PAGE 102

DMX WALL PLATE CONTROLLER

DMX WALL PLATE FOR COLOUR AND DIMMING CONTROL
PAGE 106

DMX RECEIVER

DMX SIGNAL RECEIVER
PAGE 107

WHEEL CONTROLLERS

REMOTE CONTROLLED COLOUR CONTROLLER
PAGE 108



TOUCH DMX CONTROLLER

The Touch DMX Controllers from Ledridge Lighting are powerful colour changing control systems for use with our LED DMX products. The simple touchscreen controls make them versatile and easy to use.

Both of the Touch range controllers are re-programmable enabling you to get the most from your DMX lighting projects by creating custom scenes and settings. Use the software provided or download the compatible software for your PC, Mac, iPhone, iPad, Android phone or Android tablet.

Simply connect your Touch DMX controller to a compatible DMX receiver and watch as your environment unfolds.

SOFTWARE

Touch controllers are supplied with Touch Studio desktop software for Windows and OSX. Compatible apps are available for iOS and Android devices.

With the desktop software you can create your own bespoke, advanced colour changing and dimming scenes automatically controlling the Colour Changing LED Ribbon. Once your configuration is complete you simply update it to the Touch Controller.

The apps for mobile devices allow you to wirelessly control your Touch Controller for changing colours, dimming and creating custom scenes over the air.

You can simply download compatible software from our website.



Visit the website for more information:



The Windows logo, Apple and Android logo are trademarks of Microsoft, Apple Inc and Google Inc.

C SERIES

The Touch C is ideal for smaller projects with up to 128 DMX channels. The unit features three touch sensitive buttons and a smooth glass face.

The C Series comes preloaded with several RGB effects and can be programmed with software for PC or OSX; enabling you to control dynamic scenes created step by step with adjustable timing.

P SERIES

The Touch Pro features a full colour display and is compatible with software for PC and OSX, as well as mobile apps for iOS and Android. This controller has been designed to handle the most technical and challenging projects with ease.

The stylish touch unit with a beautiful glass front makes it ideal for use in an array of environments from the home to bars and clubs.

With 1024 DMX channels and the ability to store 500 scenes across 10 zones, the P series is the best controller on the market today.



TECHNICAL SPECIFICATIONS

	C SERIES BLACK	C SERIES WHITE	P SERIES BLACK	P SERIES WHITE
PART CODE	LLTOUCHCS/B	LLTOUCHCS/W	LLTOUCHPS/B	LLTOUCHPS/W
DIMENSIONS	86 X 86 X 11MM		106 X 146 X 11MM	
WEIGHT	130G		250G	
CONNECTION TYPE	USB		USB / ETHERNET	
DMX CHANNELS	128		2 X 512	
SD CARD	N/A		MICROSD CARD	
NUMBER OS SCENES	24		500	
NUMBER OF ZONES	1		10	
MEMORY LIMIT (20 DMX CHANNELS)	840 STEPS		BASED ON SD CARD LIMIT	
POWER	5V - 12V DC		5V - 6V DC	
POWER CONNECTOR	SCREW TERMINAL		SCREW TERMINAL OR RJ45	
LIVE CONTROL	COLOUR / DIMMER		COLOUR / DIMMER / SPEED	
TOUCH BUTTONS	3		20	
PORT TRIGGERING	1		8	
CLOCK TRIGGERING			100	
RS232 TRIGGERING			YES	
SOFTWARE	ESA (PC) ESA2 (PC/MAC)		ESA (PC) ESA2(PC/MAC) SMAX LIGHT PAD (IOS / ANDROID) ARCOLIS (IOS / ANDROID)	

DMX WALL PLATE

Our DMX Wall Plate Controller is simple to use and ideal for controlling our Colour Changing LED Ribbon and Colour Perfection range.

The DMX Wall Plate Controller has 10 automatic programs including sound-to-light and strobe capabilities. This versatile controller also allows the user to manually select solid and pastel colours.

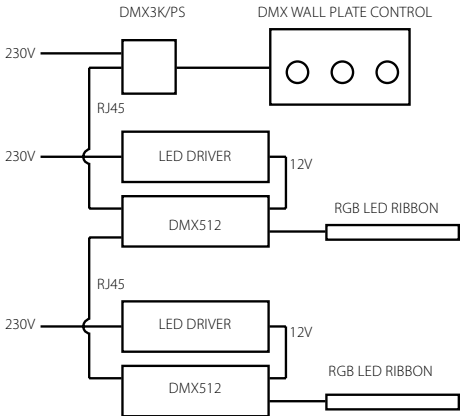
The DMX Wall Plate Controller includes full dimming capabilities to suit the mood and ambience of any environment.

The DMX Wall Plate Controller will fit onto a standard 28mm pattress.



PART CODE	INPUT VOLTAGE	OUTPUT VOLTAGE	FINISH
DMX3K/SS	12V DC	12V DC	Stainless steel
DMX3K/PC			Polished chrome
DMX3K/WHI			White
DMX3K/PS	230V	12V DC	PLUG-TOP PSU

A plug-top power supply unit will be required to power the DMX Wall Plate Controller. Please see wiring diagram.



2

YEAR

WARRANTY

DMX RECEIVER

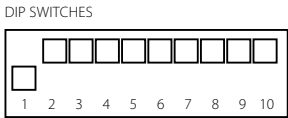
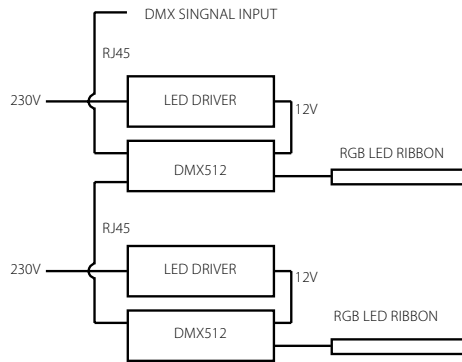
The DMX Receiver is perfect for use with our RGB colour changing LED flexible ribbons and is the ideal solution for your DMX project, large or small.

Thx DMX Receiver unit is an advanced signal receiver for use in conjunction with an LED driver and DMX controller.

To create large DMX lighting scenes, simply connect multiple DMX Receivers together using RJ45 patch cables as per the wiring diagram shown.



PART CODE	DMX512
DECODE CHANNEL	1~3
INPUT SIGNAL	DMX-512/1990 digital
OUTPUT SIGNAL	0~24V PWM
POWER INPUT	12V DC
POWER OUTPUT	180W
OPERATING TEMPERATURE	0 ~ 70°C
DIMENSIONS	175 x 45 x 35mm



When used with a DMX controller dip-switch 1 must be down as shown above.

2

YEAR

WARRANTY

RGB COLOUR WHEEL

The RGB Colour Wheel controller is a cost-effective and versatile way to manage RGB colour changing ribbon. The RGB Colour Wheel has a host of functions, making it a great quality controller for your RGB ribbon.

The RGB Colour Wheel controller is wired in sequence after the LED driver and draws its power from the input 12/24V supply. The RGB ribbon is connected via a 4-wire cable. Once connected, the colour changing properties of the ribbon can be manipulated using the hand-held remote control.

The brightness of your RGB ribbon can be adjusted using the dimming function on the RGB Colour Wheel.



PART CODE	RGBCONT4
INPUT	12/24V DC
OUTPUT	12/24V DC
MAXIMUM LOAD	216W (12V) 432W (24V)
SIGNAL TYPE	RF 433MHz
MAXIMUM REMOTE DISTANCE FROM RECEIVER	20 metres
BATTERIES	3 X AAA



ADJUSTABLE WHEEL

The Adjustable Wheel is a dedicated controller for our Colour Adjustable LED ribbon. The Adjustable Wheel allows the user to vary the colour temperature of their LED ribbon at their convenience via the hand-held remote control.

The Colour Wheel controller is wired in sequence after the LED driver and draws its power from the 12/24V supply. The colour adjustable ribbon is connected via a 2-wire cable.



PART CODE	ADJCONT1
INPUT	12/24V DC
OUTPUT	12/24V DC
MAXIMUM LOAD	216W (12V) 432W (24V)
SIGNAL TYPE	RF 433MHz
MAXIMUM REMOTE DISTANCE FROM RECEIVER	20 metres
BATTERIES	3 X AAA



LED BEST PRACTICE

Our LED lighting range is designed to not only save energy but also minimise the expensive costs associated with replacing conventional lighting sources. This guide will help you to ensure that you get the longest possible life from your LEDs.

Operating Temperatures

It is crucial that you only install our LED products in a suitable environment, taking care not to exceed the stated operating temperatures.

If the ambient temperature is below or higher than the recommended temperatures then you risk significantly reducing the LED life. The warranty on the product may also be affected.

Operating temperatures are stated on the individual product pages within this catalogue and our product specification sheets. They are also stated on the installation instructions supplied with the product.

LED Ribbon & Extrusions

LED ribbons must always be handled with care and should always be kept as flat as possible. Never twist or sharply bend the LED ribbon. LED ribbons will bend in concave and convex angles, however extreme care should be taken if attempting to achieve a full 90 degree angle.

LED ribbon can be installed without the use of our aluminum extrusions. We do however recommend that you always install LED ribbons onto an aluminum extrusion to act as a heat-sink. The aluminum extrusion will also help protect your new LED ribbon. Unless otherwise stated, our LED extrusion range does not provide any further IP protection to the internal LED ribbon.

All LED ribbon products are self-adhesive and are supplied with a multi-purpose 3M tape. Whilst 3M tape is suitable for most

applications, in some instances extra adhesive may be required. For maximum adhesion please ensure that the surface is clean and free of grease before installing your LED ribbon.

It is not recommended to install any LED Ribbon directly onto wood-based products, porous or uneven surfaces such as brick or concrete.

The maximum run length of any LED ribbon is 5 metres, longer runs can be achieved by wiring multiple lengths in parallel to the LED driver. Exceeding maximum run lengths will result in decreased brightness and may also affect the colour of your LED ribbon.

Installations

It is always recommended that a competent electrician installs our LED products. They should always follow the installation instructions provided to ensure the safe and reliable operation of our products. Failure to follow instructions may result in reduced LED life, or damage to you or your property. Incorrect installation may also affect the product warranty. If ever in any doubt, please ask.

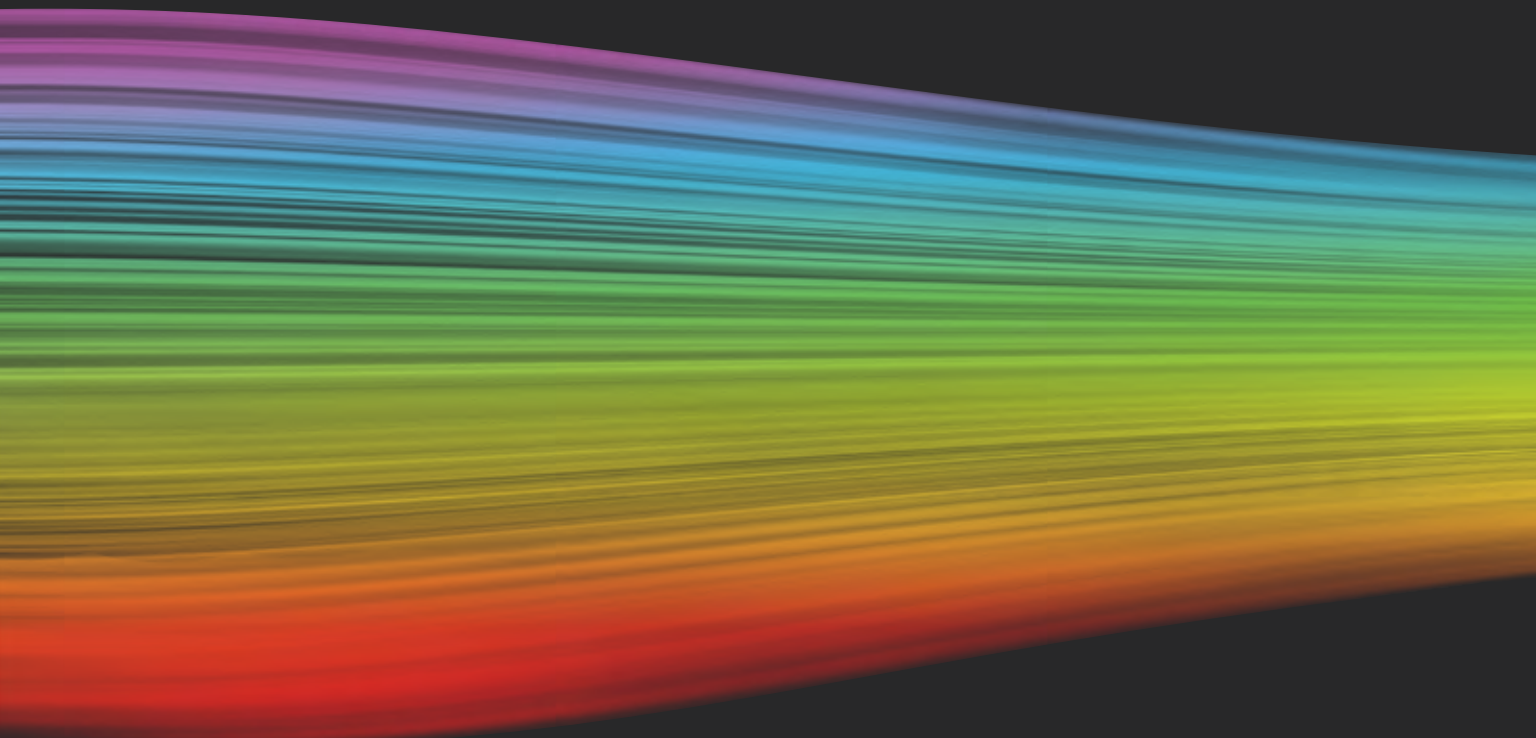
LEDRIDGE ONLINE

Visit our website to find details of your local stockist.
Ledridge products are available from all Electrical Wholesalers.



www.ledridge.co.uk





UNIT 6, 19 HIGHCLIFFE ROAD, HAMILTON, LE5 1TY
T 0116 246 1188 F 0116 276 7164 sales@ledridge.co.uk
WWW.LEDRIDGE.CO.UK